

VORTAC VXV	APP CRS	Rwy Idg	5506
116.4	102°	TDZE	1014
Chan 111		Apt Elev	1014

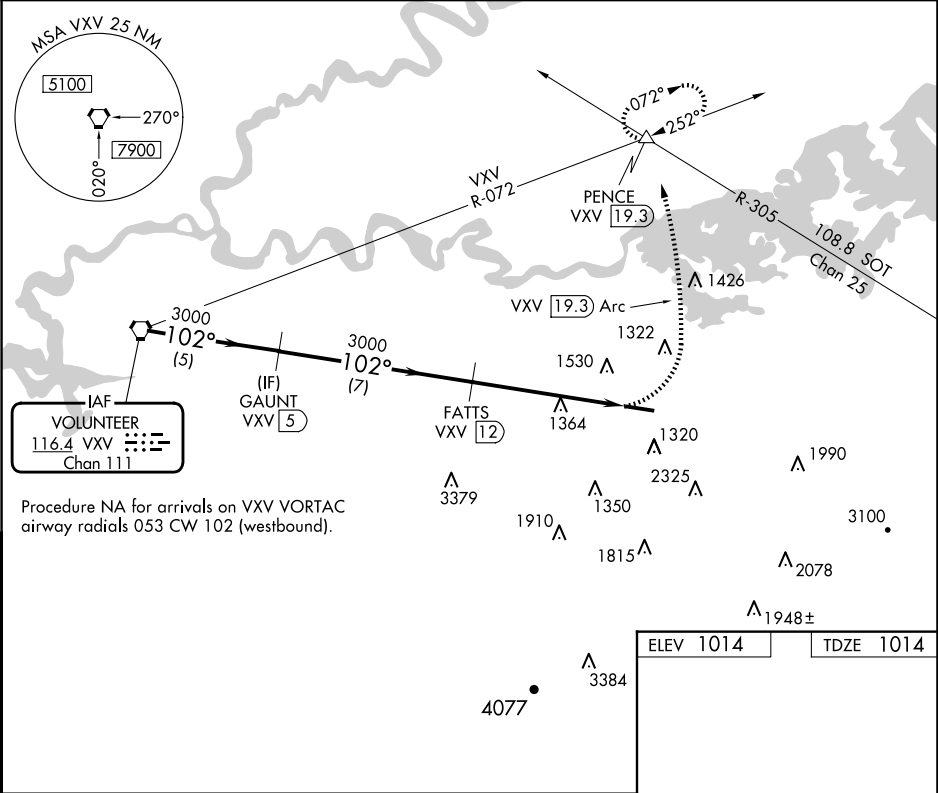
VOR/DME RWY 10

GATLINBURG-PIGEON FORGE (GKT)

Procedure NA at night. Helicopter visibility reduction below 1 SM NA. When local altimeter setting not received, use Mc Ghee Tyson altimeter setting and increase all MDAs 60 feet and S-10 visibility Cat A ¼ SM.

MISSED APPROACH: Climbing left turn to 4000 on VXV VORTAC 19.3 DME CCW Arc to PENCE INT/VXV 19.3 DME and hold, continue climb-in-hold to 4000.

AWOS-3 126.875	KNOXVILLE APP CON 132.8 360.8	UNICOM 123.0 (CTAF) 0
-------------------	----------------------------------	--------------------------



VGSI and descent angles not coincident (VGSI Angle 3.50/TCH 33).

VXV VORTAC

GAUNT VXV (5)

FATTS VXV (12)

VXV (19.3) Arc

PENCE

3000

3000

3000

3.26°

TCH 45

4000

5 NM

7 NM

5.6 NM

CATEGORY	A	B	C	D
S-10	1840-1 826 (900-1)	1840-1¼ 826 (900-1¼)	1840-2½ 826 (900-2½)	1840-2¾ 826 (900-2¾)
CIRCLING	1840-1¼ 826 (900-1¼)	1880-1¼ 866 (900-1¼)	2040-3 1026 (1100-3)	2680-3 1666 (1700-3)

REIL Rwys 10 and 28 0
MIRL Rwy 10-28 0