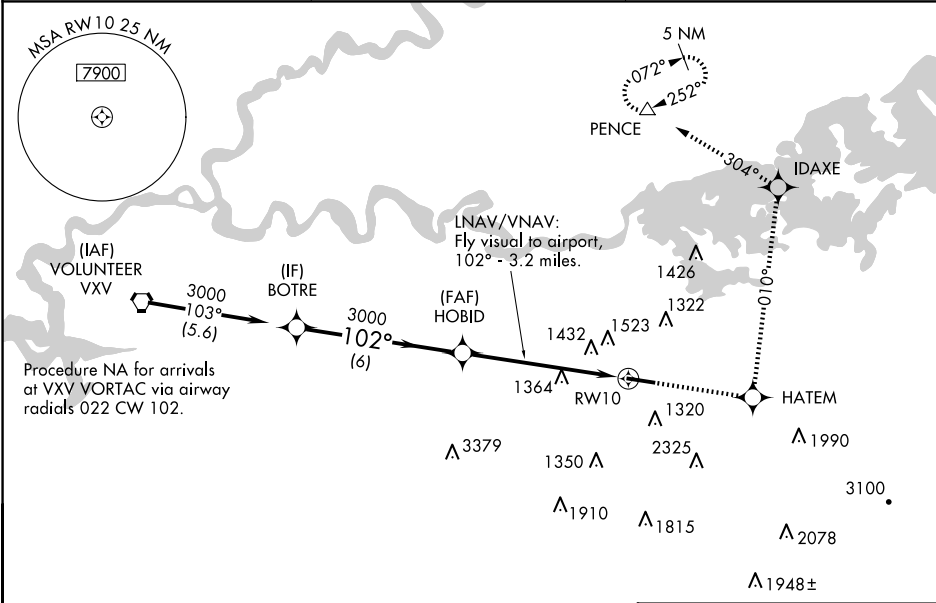


WAAS CH 99510 W10A	APP CRS 102°	Rwy Idg TDZE 1014 Apt Elev 1014	5506
--	------------------------	---	-------------

RNAV (GPS) RWY 10
GATLINBURG-PIGEON FORGE (GKT)

RNP APCH - GPS.	LNAV/VNAV NA when using Mc Ghee Tyson altimeter setting. For uncompensated Baro-VNAV systems, LNAV/VNAV NA below -17°C or above 47°C. Helicopter visibility reduction below ¾ SM NA. When local altimeter setting not received, use Mc Ghee Tyson altimeter setting; increase LPV DA to 1425 feet, and all visibilities ½ SM; increase all MDAs 60 feet and Circling visibility Cat A ¼ SM. Circling to Rwy 28 NA at night. Procedure NA at night.	MISSED APPROACH: Climb to 4000 direct HATEM and via 010° track to IDAXE and via 304° track to PENCE and hold.
-----------------	--	---

AWOS-3 126.875	KNOXVILLE APP CON 132.8 360.8	UNICOM 123.0 (CTAF) 0
--------------------------	---	---------------------------------



VGSI and RNAV glidepath not coincident (VGSI Angle 3.50/ TCH 33).				
<div>Procedure Turn NA</div> <div>GP 3.00° TCH 45</div> <div>3000</div> <div>102°</div> <div>3000</div> <div>6 NM</div> <div>6 NM</div> <div>4000</div> <div>HATEM</div> <div>tr 010°</div> <div>IDAXE</div> <div>tr 304°</div> <div>PENCE</div> <div>LNAB/VNAV: Fly visual to airport, 102° - 3.2 miles.</div> <div>RW10</div> <div>5506 X 75</div> <div>28</div>				
CATEGORY	A	B	C	D
LPV DA	1371-1¼		357 (400-1¼)	
LNAB/VNAV	2013-2	999 (1000-2)	2013-3	999 (1000-3)
LNAB MDA	1800-1 786 (800-1)	1800-1¼ 786 (800-1¼)	1800-2¼ 786 (800-2¼)	1800-2½ 786 (800-2½)
CIRCLING	1800-1 786 (800-1)	1880-1¼ 866 (900-1¼)	2040-3 1026 (1100-3)	2680-3 1666 (1700-3)
REIL Rwy 10 and 28 0 MIRL Rwy 10-28 0				

SE-1, 10 JUL 2025 to 07 AUG 2025

SE-1, 10 JUL 2025 to 07 AUG 2025