

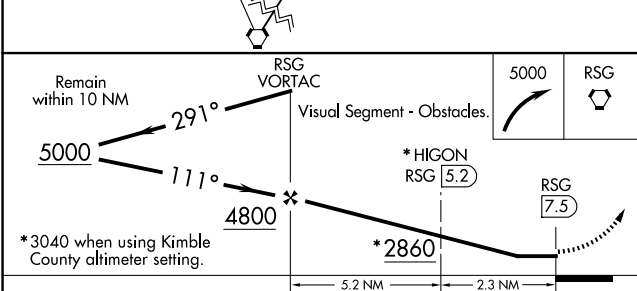
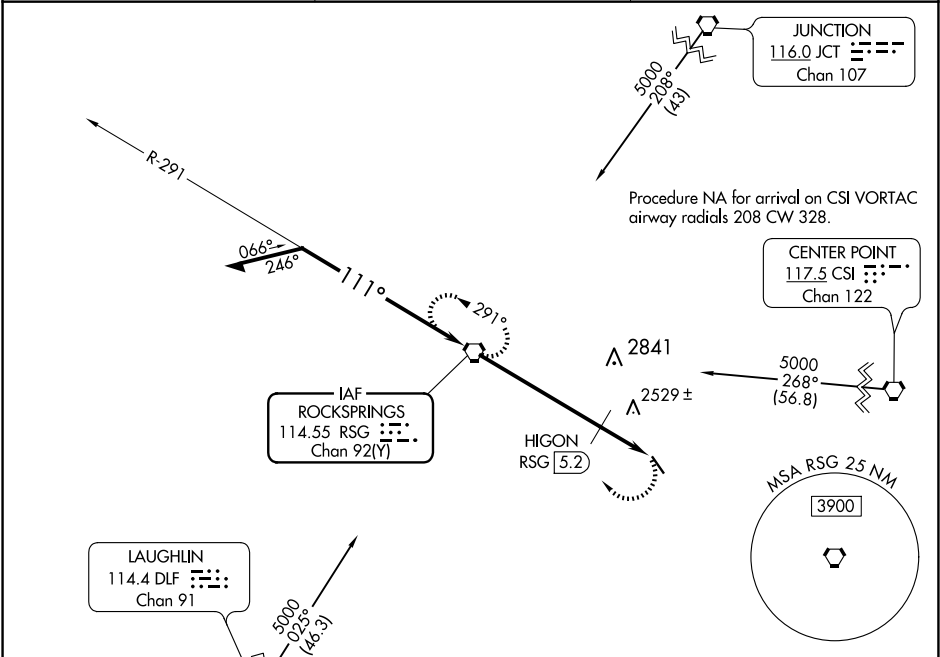
VORTAC RSG	APP CRS	Rwy Idg	3772
114.55	111°	TDZE	2372
Chan 92(Y)		Apt Elev	2372

VOR RWY 14
EDWARDS COUNTY (ECU)

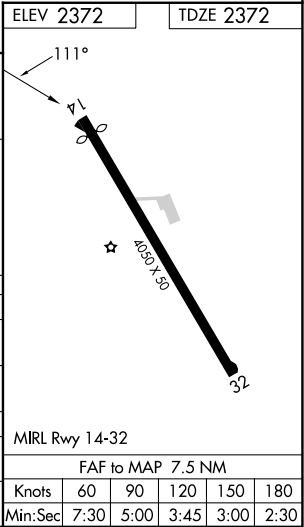
When local altimeter setting not received, use Kimble County altimeter setting and increase all MDAs 180 feet. Procedure NA at night.
Rwy 14 helicopter visibility reduction below 1 SM NA.

MISSED APPROACH: Climbing right turn to 5000 direct RSG VORTAC and hold, continue climb-in-hold to 5000.

AWOS-3	DEL RIO APP CON *	CTAF
118.175	119.6 259.1	122.9



CATEGORY	A	B	C	D
S-14	2860-1	488 (500-1)	2860-1¼ 488 (500-1¼)	NA
CIRCLING	2860-1	488 (500-1)	2860-1½ 488 (500-1½)	NA
HIGON FIX MINIMUMS				
S-14	2780-1	408 (500-1)	2780-1¼ 408 (500-1¼)	NA
CIRCLING	2800-1 428 (500-1)	2840-1 468 (500-1)	2840-1½ 468 (500-1½)	NA



SC-3, 10 JUL 2025 to 07 AUG 2025

SC-3, 10 JUL 2025 to 07 AUG 2025