

MONROE, WISCONSIN

AL-6003 (FAA)

23222

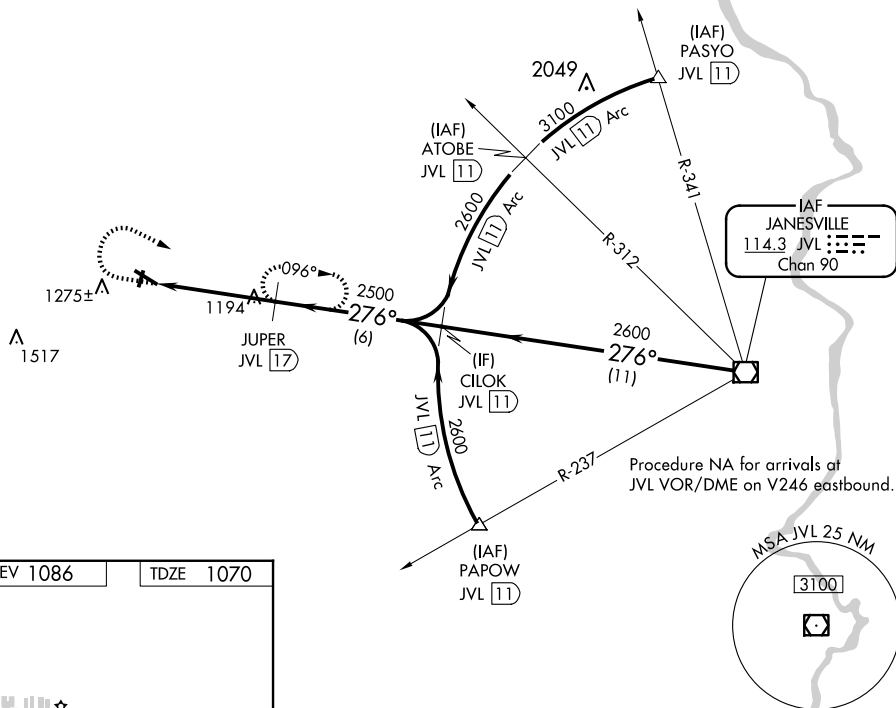
VOR/DME JVL <b>114.3</b> Chan <b>90</b>	APP CRS <b>276°</b>	Rwy Idg <b>5000</b> TDZE <b>1070</b> Apt Elev <b>1086</b>
---	------------------------	---

VOR/DME RWY 30  
MONROE MUNI (EFT)

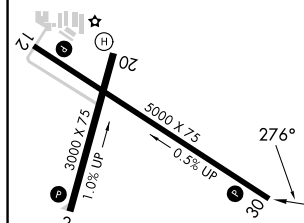
**T** When local altimeter setting not received, use Albertus altimeter setting and increase all MDA 100 feet, increase Circling Cat C visibility  $\frac{1}{4}$  mile.  
**A** Rwy 30 helicopter visibility reduction below  $\frac{3}{4}$  SM NA. Circling to Rwy 2-20 NA at night.

**MISSED APPROACH:** Climb to 1800 then climbing right turn to 2600 on JVL VOR/DME R-276 to JUPER/JVL 17 DME and hold.

AWOS-3 <b>118.375</b>	ROCKFORD APP CON <b>126.0 327.0</b>	UNICOM <b>123.05 (CTAF) 0</b>
--------------------------	--	----------------------------------



ELEV 1086		TDZE 1070
-----------	--	-----------



MIRL Rwy 12-30 and 2-20 **L**  
REIL Rwy 2, 12, 20 and 30 **L**

MONROE, WISCONSIN  
Amdt 8B 20MAY21

42°37'N-89°35'W

MONROE MUNI (EFT)  
VOR/DME RWY 30

EC-3, 10 JUL 2025 to 07 AUG 2025

EC-3, 10 JUL 2025 to 07 AUG 2025

Diagram illustrating the JVL 21.3 approach profile, showing altitude, distance, and speed data.

Key elements of the diagram:

- Altitudes:** 1800, 2600, 2500, 2600, 2700.
- Distances:** 4.3 NM, 6 NM, 11 NM.
- Angles:** 3.04° (climb gradient), 276° (turn angle).
- Waypoints/Obstacles:** JVL 21.3, JVL 17, CILOK JVL 11, JVL VOR/DME.
- Procedure:** Turn NA.

CATEGORY	A	B	C	D
S-30	1460-1 390 (400-1)	1460-1¼ 390 (400-1¼)	1460-1½ 390 (400-1½)	1460-1¾ 390 (400-1¾)
CIRCLING	1540-1 454 (500-1)	1640-1 554 (600-1)	1640-1½ 554 (600-½)	1640-2 554 (600-2)