

APP CRS	Rwy Idg	5000
301°	TDZE	1070
	Apt Elev	1086

RNAV (GPS) RWY 30
MONROE MUNI (EFT)

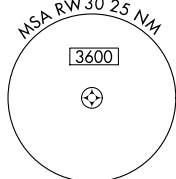
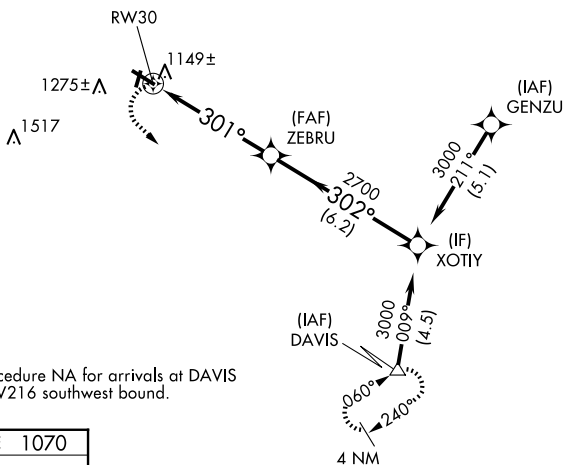
RNP APCH-GPS.

T When local altimeter setting not received, use Albertus altimeter setting and increase
A all MDA 100 feet, increase LNAV Cat C/D and Circling Cat C visibility ¼ mile.
VDP NA when using Albertus altimeter setting. Rwy 30 helicopter visibility reduction
below ¾ SM NA. Circling to Rwy 2-20 NA at night.

MISSED APPROACH:
Climbing left turn to 3000
direct DAVIS and hold.

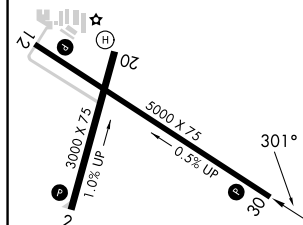
AWOS-3
118.375

ROCKFORD APP CON
126.0 327.0

UNICOM
123.05 (CTAF) **L**2049 Δ 

Procedure NA for arrivals at DAVIS
on V216 southwest bound.

ELEV 1086		TDZE 1070
-----------	--	-----------



MIRL Rwys 12-30 and 2-20 **L**
REIL Rwys 2, 12, 20, and 30 **L**

MONROE, WISCONSIN
Orig-B 20MAY21

42°37'N-89°35'W

MONROE MUNI (EFT)

RNAV (GPS) RWY 30

EC-3, 10 JUL 2025 to 07 AUG 2025

EC-3, 10 JUL 2025 to 07 AUG 2025