

APP CRS  
**180°**

Rwy Ldg  
TDZE **1063**

Apt Elev  
**1080**

**RNAV (GPS) RWY 17**

MENA INTERMOUNTAIN MUNI (MEZ)

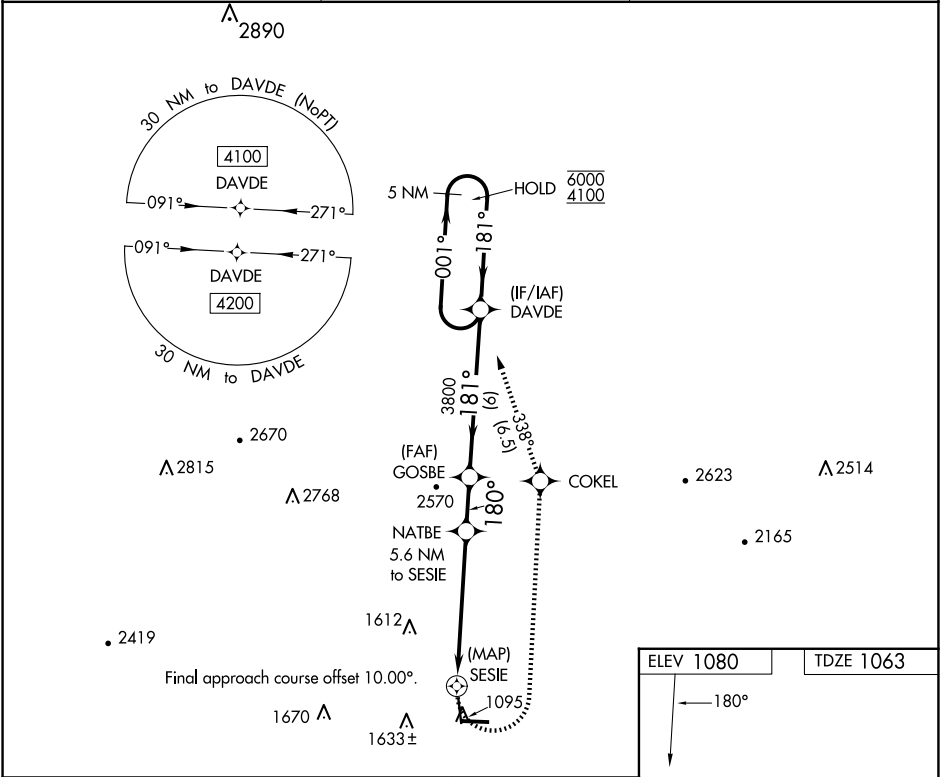
RNP APCH.

▼ Circling Rwy 35 NA at night.

▲ Rwy 17 helicopter visibility reduction below ¾ SM NA.

MISSED APPROACH: Climbing left turn to 4100 direct COKEI and track 338° to DAVDE and hold.

AWOS-3 <b>118.025</b>	MEMPHIS CENTER <b>126.1 269.0</b>	UNICOM <b>122.8 (CTAF) 0</b>
--------------------------	--------------------------------------	---------------------------------



VGSI and descent angles not coincident (VGSI Angle 3.00/TCH 50).

5 NM Holding Pattern

DAVDE

GOSBE

NATBE 5.6 NM to SESIE

SESIE

6 NM

1.9 NM

4.3 NM

1.3

0.5

CATEGORY	A	B	C	D
RNAV MDA	1660-1	597 (600-1)	1660-1¼ 597 (600-1¼)	NA
CIRCLING	1840-1 760 (800-1)	2140-1½ 1060 (1100-1½)	2220-3 1140 (1200-3)	NA

ELEV 1080

TDZE 1063

180°

5001 X 75

5485 X 100

0.5% UP

35

27

MIRL Rwy 17-35 0

MIRL Rwy 9-27

REIL Rwy 9, 27 and 35