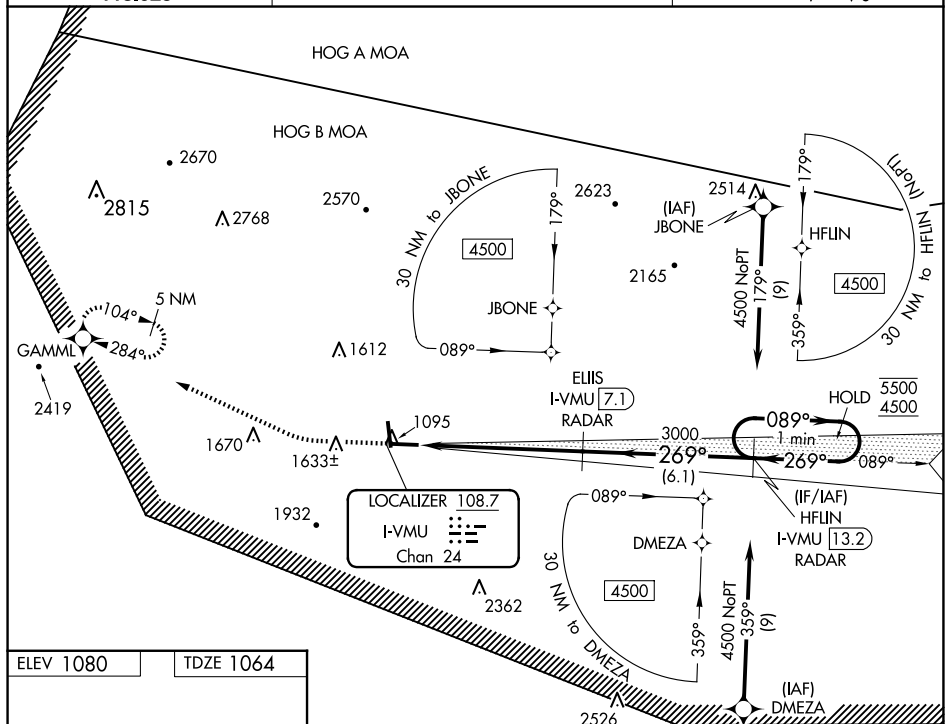


ILS or LOC RWY 27
MENA INTERMOUNTAIN MUNI (MEZ)

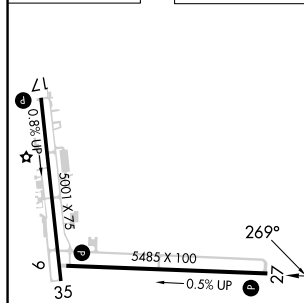
MISSED APPROACH: Climb to 1800 then climbing right turn to 6000 direct GAMML and hold, continue climb-in-hold to 6000.

T
A Circling Rwy 35 NA at night.

UNICOM
122.8 (CTAF) **L**

SC-1, 10 JUL 2025 to 07 AUG 2025

ELEV 1080		TDZE 1064
-----------	--	-----------



MIRL Rwy 17-35 **L**
MIRL Rwy 9-27
REIL Rwy 9, 27 and 35

FAF to MAP 6 NM

Knots	60	90	120	150	180
Min:Sec	6:00	4:00	3:00	2:24	2:00

1800 ↑	6000 ↗	GAMML ✳	VGSJ and ILS glidepath not coincident (VGSJ Angle 3.00/TCH 49).	
			<p>ELIS I-VMU (13.2) RADAR</p> <p>HFLIN (13.2) One Minute Holding Pattern</p> <p>089° → 5500 ← 269° 4500</p> <p>GS 3.00° TCH 56</p>	
<p>I-VMU (2.8)</p> <p>I-VMU (1.1)</p> <p>1.6 NM</p> <p>4.3 NM</p> <p>6.1 NM</p>				
CATEGORY	A	B	C	D
S-ILS 27	1502-1¼ 438 (500-1¼)			NA
S-LOC 27	1620-1	556 (600-1)	1620-1½ 556 (600-1½)	NA
CIRCLING	1840-1 760 (800-1)	2140-1½ 1060 (1100-1½)	2220-3 1140 (1200-3)	NA