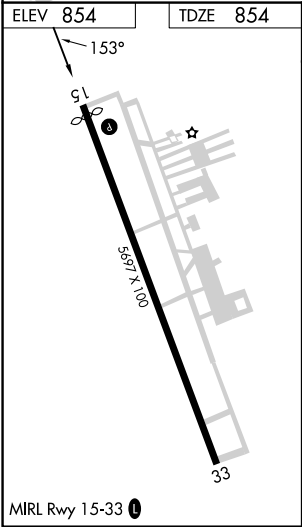
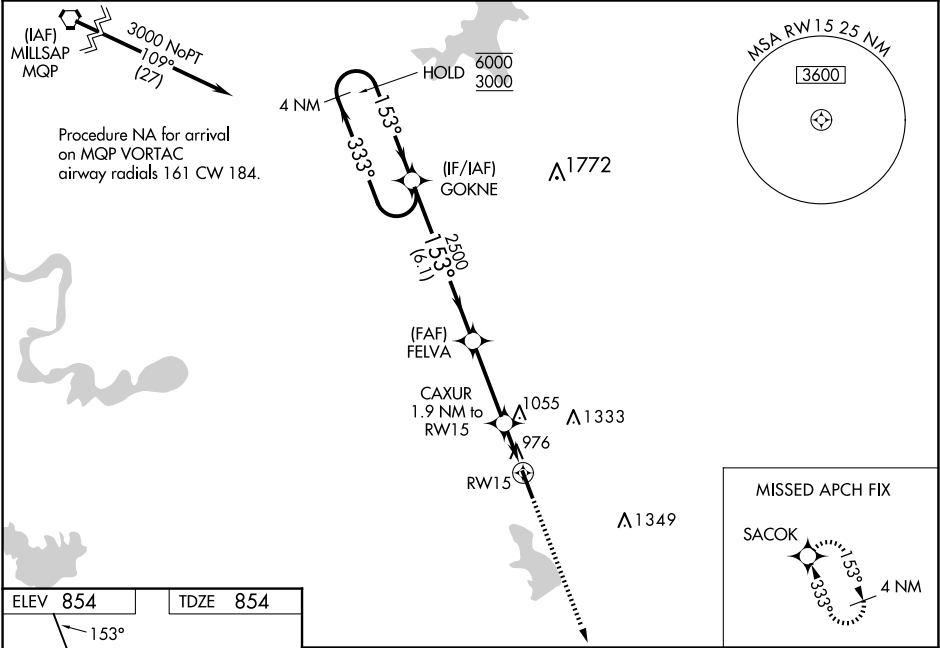


WAAS CH 61331 W15A	APP CRS 153°	Rwy Idg TDZE Apt Elev	5512 854 854
----------------------------------------	------------------------	-----------------------------	-----------------------------------------

RNAV (GPS) RWY 15
CLEBURNE RGNL (CPT)

RNP APCH.	MISSED APPROACH: Climb to 3000 direct SACOK and hold.
▼ For uncompensated Baro-VNAV systems, LNAV/VNAV NA below -16°C or above 54°C. Rwy 15 helicopter visibility reduction below ¾ SM NA. ▲	

AWOS-3 119.525	LONE STAR APP CON 135.975 379.9	UNICOM 122.8 (CTAF) 0
--------------------------	-------------------------------------------	---------------------------------



4 NM

Holding Pattern

GOKNE

FELVA

CAXUR

1.9 NM to RW15

RW15

3000

3000

2500

2500

1480

333°

153°

153°

153°

GP 3.00°

TCH 39°

3000

SACOK

*LNAV only.

6.1 NM

3.2 NM

1.9 NM

CATEGORY	A	B	C	D
LPV DA	1240-1⅓		386 (400-1⅓)	
LNAV/VNAV DA	1397-1⅞		543 (600-1⅞)	
LNAV MDA	1360-1	506 (600-1)	1360-1⅓	506 (600-1⅓)
CIRCLING	1400-1	546 (600-1)	1680-2½ 826 (900-2½)	1700-2¾ 846 (900-2¾)

SC-2, 10 JUL 2025 to 07 AUG 2025

SC-2, 10 JUL 2025 to 07 AUG 2025