

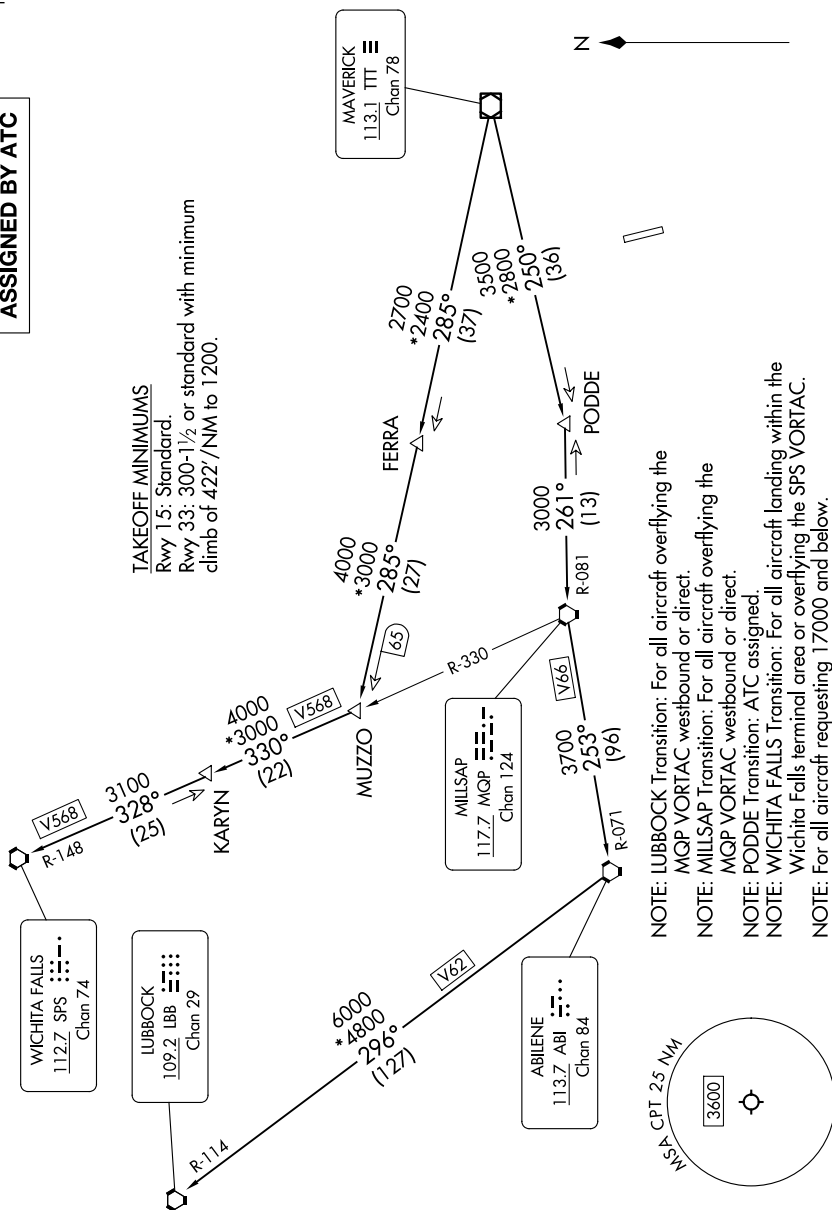
KINGDOM FIVE DEPARTURE

LONE STAR DEP CON
135.975 379.9
CTAF
122.8

**TOP ALTITUDE:
ASSIGNED BY ATC**

RADAR and DME required.

TAKEOFF MINIMUMS
Rwy 15: Standard.
Rwy 33: 300-1½ or standard with minimum
climb of 422'/NM to 1200.



NOTE: Chart not to scale.

(CONTINUED ON FOLLOWING PAGE)

SC-2, 10 JUL 2025 to 07 AUG 2025

KINGDOM FIVE DEPARTURE

(KING5.TTT) 17APR25

CLEBURNE, TEXAS

CLEBURNE RGNL (CPT)