

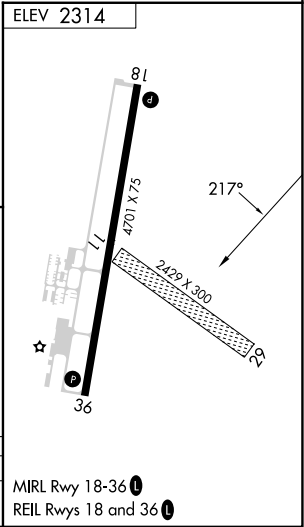
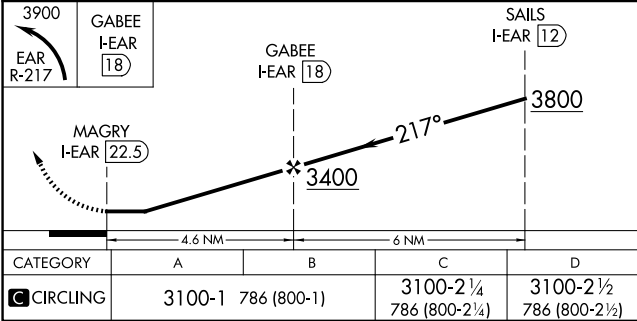
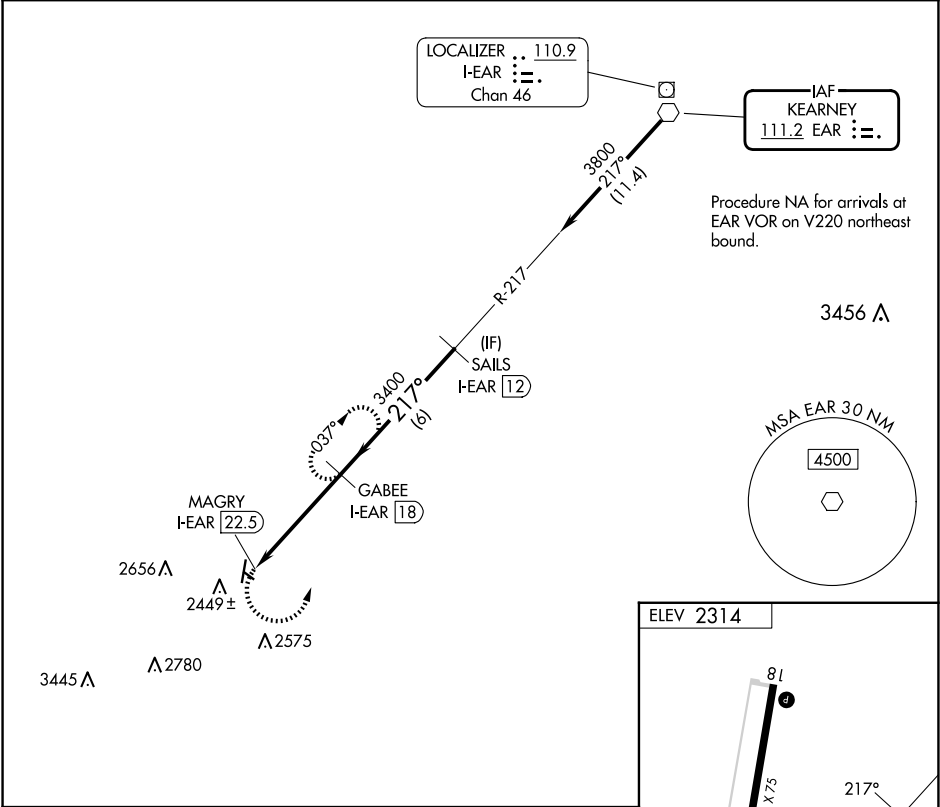
VOR EAR 111.2	APP CRS 217°	Rwy Ldg TDZE Apt Elev N/A N/A 2314
-------------------------	------------------------	--

VOR-A

BREWSTER FLD (HDE)

DME required.	MISSED APPROACH: Climbing left turn to 3900 on EAR VOR R-217 to GABEE/I-EAR 18 DME and hold, continue climb-in-hold to 3900.
<div><div>▼</div><div>⚠</div></div> <div>Circling NA to Rwys 11 and 29. When local altimeter setting not received, use EAR altimeter setting and increase all MDAs 80 feet, and all visibilities ¼ SM. DME from I-EAR localizer. Simultaneous reception of EAR VOR and I-EAR DME required.</div>	

AWOS-3 121.325	DENVER CENTER 132.7 226.675	UNICOM 122.8 (CTAF) 0
--------------------------	---------------------------------------	---------------------------------



NC-2, 10 JUL 2025 to 07 AUG 2025

NC-2, 10 JUL 2025 to 07 AUG 2025