

WAAS CH <b>69301</b> <b>W36A</b>	APP CRS <b>003°</b>	Rwy Ldg TDZE <b>2310</b> Apt Elev <b>2314</b>
--	------------------------	---

RNAV (GPS) RWY 36

BREWSTER FLD (HDE)

RNP APCH - GPS.

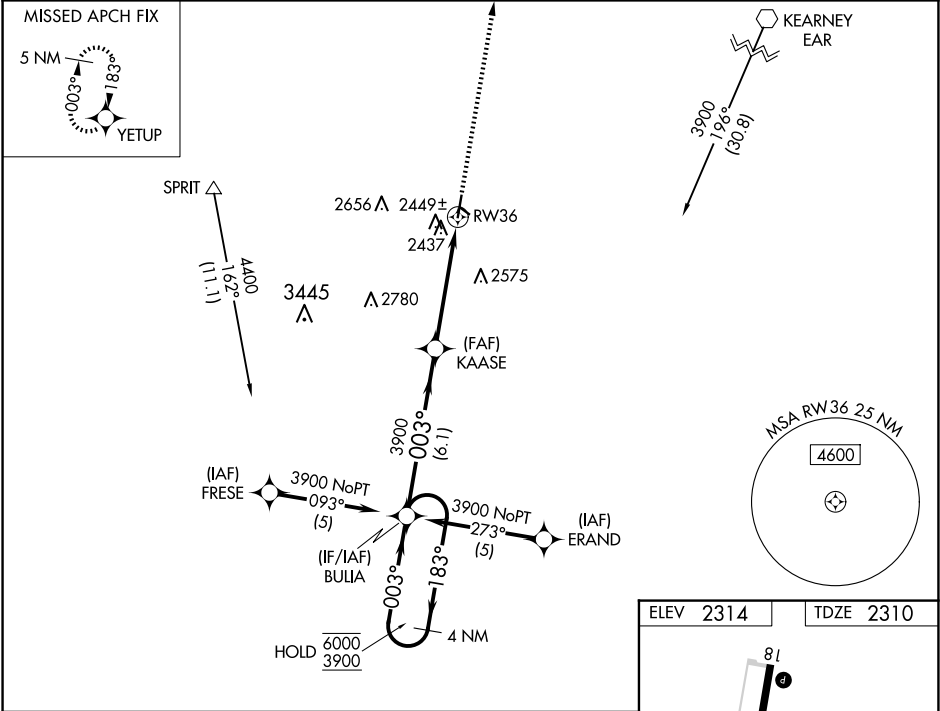
▼

▲

Circling NA to Rwys 11 and 29. When local altimeter setting not received, use EAR altimeter setting and increase LPV DA to 2637 feet and all visibilities ¼ SM. Increase all MDAs 80 feet and LNAV visibility Cat C/D ⅓ SM, and Circling visibility Cat C/D ¼ SM. VDP NA when using EAR altimeter setting.

MISSED APPROACH: Climb to 4000 direct YETUP and hold.

AWOS-3 <b>121.325</b>	DENVER CENTER <b>132.7 226.675</b>	UNICOM <b>122.8 (CTAF) 0</b>
--------------------------	---------------------------------------	---------------------------------



4 NM Holding Pattern

BULIA

KAASE

4000

YETUP

6000

3900

183°

003°

003°

3900

GP 3.00°

TCH 40

6.1 NM

3.5 NM

1.3 NM

1.3 NM to RW36

RW36

CATEGORY	A	B	C	D	
LPV	DA	2560-1		250 (300-1)	
LNAV	MDA	2760-1	450 (500-1)	2760-1⅓	450 (500-1⅓)
CIRCLING	2840-1	2880-1	3020-2	3020-2¼	
	526 (600-1)	566 (600-1)	706 (800-2)	706 (800-2¼)	

ELEV 2314

TDZE 2310

81

4701 X 75

2420 X 300

36

003°

MIRL Rwy 18-36 0

REIL Rws 18 and 36 0

NC-2, 10 JUL 2025 to 07 AUG 2025

NC-2, 10 JUL 2025 to 07 AUG 2025