

WAAS CH 73002 W18A	APP CRS 183°	Rwy Ldg 4701 TDZE 2310 Apt Elev 2314
--	------------------------	---

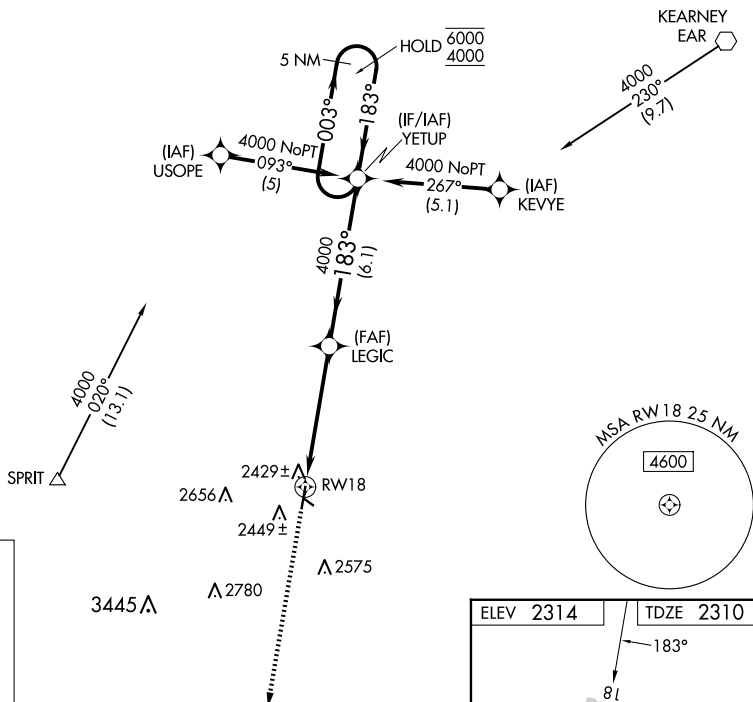
RNAV (GPS) RWY 18
BREWSTER FLD (HDE)

RNP APCH - GPS.

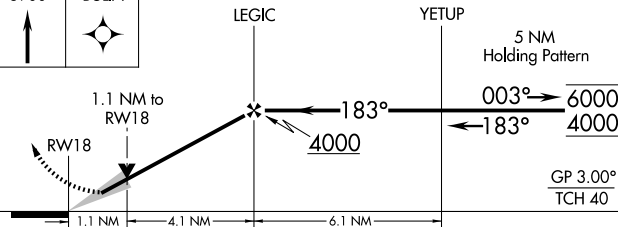
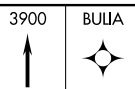
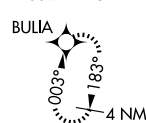
- T** Circling NA to Rwy 11 and 29. VDP NA when using EAR altimeter setting.
A When local altimeter setting not received, use EAR altimeter setting and increase LPV DA to 2637 feet and all visibilities $\frac{1}{4}$ SM. Increase all MDAs 80 feet and LNAV visibility Cat C/D $\frac{3}{8}$ SM, and Circling visibility Cat C/D $\frac{1}{4}$ SM.

MISSED APPROACH: Climb to 3900 direct BULIA and hold.

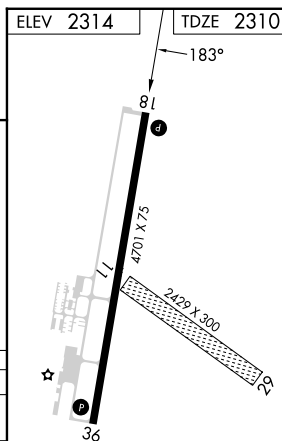
AWOS-3 121.325	DENVER CENTER 132.7 226.675	UNICOM 122.8 (CTAF) 0
--------------------------	---------------------------------------	---------------------------------



MISSED APCH FIX



CATEGORY	A	B	C	D
LPV DA	2560-1 250 (300-1)			
LNAV MDA	2680-1 370 (400-1)			
CIRCLING	2840-1 526 (600-1)	2880-1 566 (600-1)	3020-2 706 (800-2)	3020-2¼ 706 (800-2¼)



MIRL Rwy 18-36 **L**
REIL Rwy 18 and 36 **L**

RNAV (GPS) RWY 18