

CIRCLEVILLE, OHIO

AL-5995 (FAA)

23278

VOR XUB <b><u>112.5</u></b>	APP CRS <b>165°</b>	Rwy Idg TDZE Apt Elev	<b>4346</b> <b>685</b> <b>685</b>
--------------------------------	------------------------	-----------------------------	---

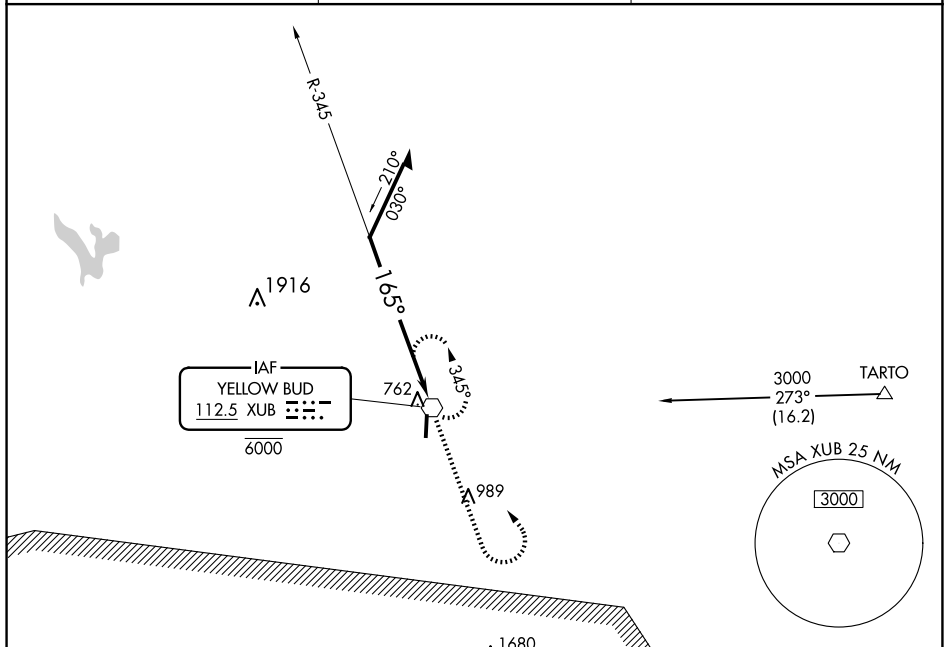
VOR RWY 19

PICKAWAY COUNTY MEML (CYO)

**T** Use Chillicothe altimeter setting, when not received use Rickenbacker Int altimeter setting  
**A** and increase all MDAs 60 feet and Cats C and D visibility  $\frac{1}{4}$  SM. Circling Rwy 1 NA  
at night. Rwy 19 helicopter visibility reduction below  $\frac{3}{4}$  SM NA.

**MISSED APPROACH:** Climb to 2700 then climbing left turn to 3000 direct XUB VOR and hold.

RZT AWOS-3 <b>119.225</b>	COLUMBUS APP CON <b>134.0 279.6</b>	UNICOM <b>122.7 (CTAF) 0</b>
------------------------------	--	---------------------------------



EC-2, 10 JUL 2025 to 07 AUG 2025

Diagram illustrating the BUCKEYE MOA (Missile Operations Area) and a vertical profile view.

**BUCKEYE MOA:**

- Top vertex: **XUB VOR** (6000)
- Bottom vertex: **2600**
- Right side: **2700** and **3000**
- Bottom side: **XUB**
- Angles: **345°** and **165°**
- Instruction: **Remain within 10 NM**

**Vertical Profile View:**

- Top: **61**
- Label: **4346 X 75**
- Slope: **0.5% UP**
- Star symbol on the right side.

CIRCLEVILLE, OHIO

Amdt 3A 20JUN19

39°31'N - 82°59'W

PICKAWAY COUNTY MEML (CYO)

VOR RWY 19