

WAAS CH 87038 W19A	APP CRS 188°	Rwy Idg TDZE 685 Apt Elev 685
--	------------------------	---

RNAV (GPS) RWY 19

PICKAWAY COUNTY MEML (CYO)

RNP APCH

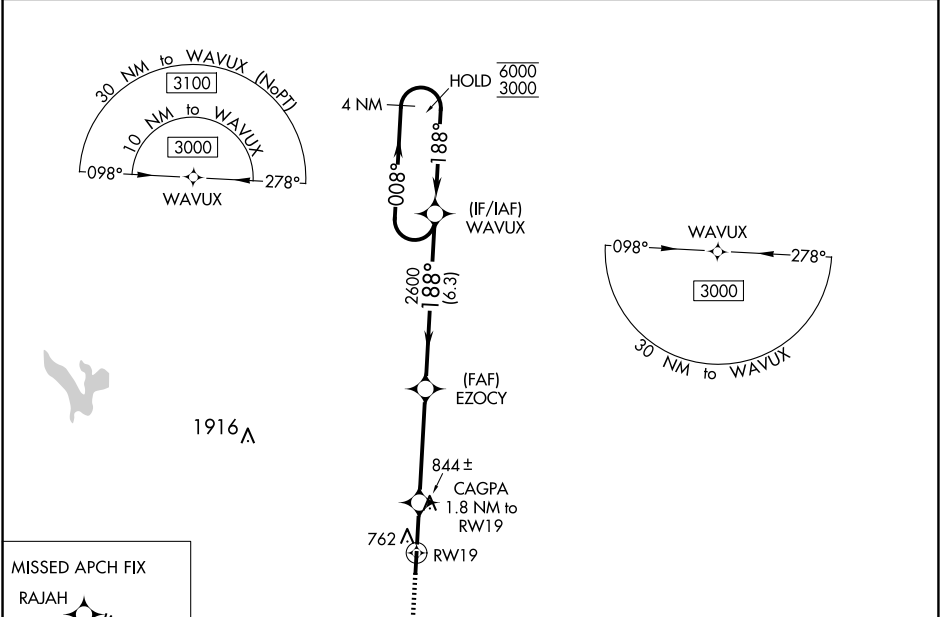
▼

▲

Baro-VNAV and VDP NA when using Rickenbacker Intl altimeter setting. For uncompensated Baro-VNAV systems, LNAV/VNAV NA below -16°C or above 54°C. Use Chillycothe altimeter setting, when not received use Rickenbacker Intl altimeter setting and increase LPV DA to 985 feet, LNAV/VNAV DA to 1150 feet, and all visibilities ¼ SM. Increase all MDAs 60 feet and Cats C and D visibility ¼ SM. Circling Rwy 1 NA at night. Rwy 19 helicopter visibility reduction below ¾ SM NA.

MISSED APPROACH: Climb to 3000 direct RAJAH and hold.

RZT AWOS-3 119.225	COLUMBUS APP CON 134.0 279.6	UNICOM 122.7 (CTAF) 0
------------------------------	--	---------------------------------



3000

RAJAH

VGSI and RNAV glidepath not coincident (VGSI Angle 3.00°/TCH 24).

4 NM Holding Pattern

*LNAV only.

RW19

CAGPA 1.8 NM to RW19

EZOCY 2600

WAVUX

1.2 NM

0.6 NM

4.1 NM

6.3 NM

188°

008°

6000

3000

GP 3.00°

TCH 40

CATEGORY	A	B	C	D
LPV DA	935-7⁄8		250 (300-7⁄8)	
LNAV/VNAV DA	1100-13⁄8		415 (500-13⁄8)	
LNAV MDA	1100-1	415 (500-1)	1100-13⁄8	415 (500-13⁄8)
CIRCLING	1180-1 495 (500-1)	1200-1 515 (600-1)	1300-13⁄4 615 (700-13⁄4)	1340-2 655 (700-2)

