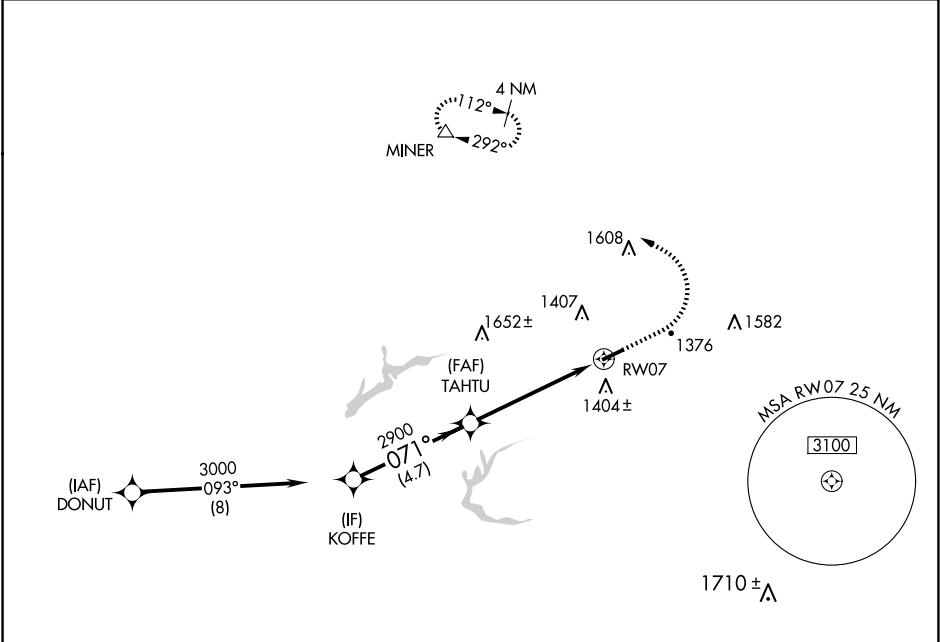


WAAS CH <b>62930</b> <b>W07A</b>	APP CRS <b>071°</b>	Rwy Idg TDZE <b>1164</b> Apt Elev <b>1164</b>
--	------------------------	---

RNAV (GPS) RWY 7

CARROLL COUNTY-TOLSON (TSO)

RNP APCH	Procedure NA at night. Use Akron-Canton Rgnl altimeter setting; when not received use New Philadelphia altimeter and increase all MDA 20 feet. Rwy 7 helicopter visibility reduction below 1 SM NA.	MISSED APPROACH: Climb to 2000 then climbing left turn to 3000 direct MINER and hold.
CLEVELAND APP CON★ 125.5 371.875		UNICOM 122.7 (CTAF) 0



KOFFE		Visual Segment - Obstacles.		2000	3000	MINER
3000		TAHTU		↑	↘	△
071°		2900		RW07		
4.7 NM		5.3 NM				
CATEGORY	A	B	C	D		
LP MDA	1760-1	596 (600-1)	NA			
LNAV MDA	1820-1	656 (700-1)	NA			
CIRCLING	1840-1	676 (700-1)	NA			

ELEV 1164

TDZE 1164

REIL Rwy 7 and 25 0  
MIRL Rwy 7-25 0