

WAAS CH 66005 W07A	APP CRS 066°	Rwy Idg TDZE 2275 Apt Elev 2275
--	------------------------	---

RNAV (GPS) RWY 7

SOMERSET COUNTY (2G9)

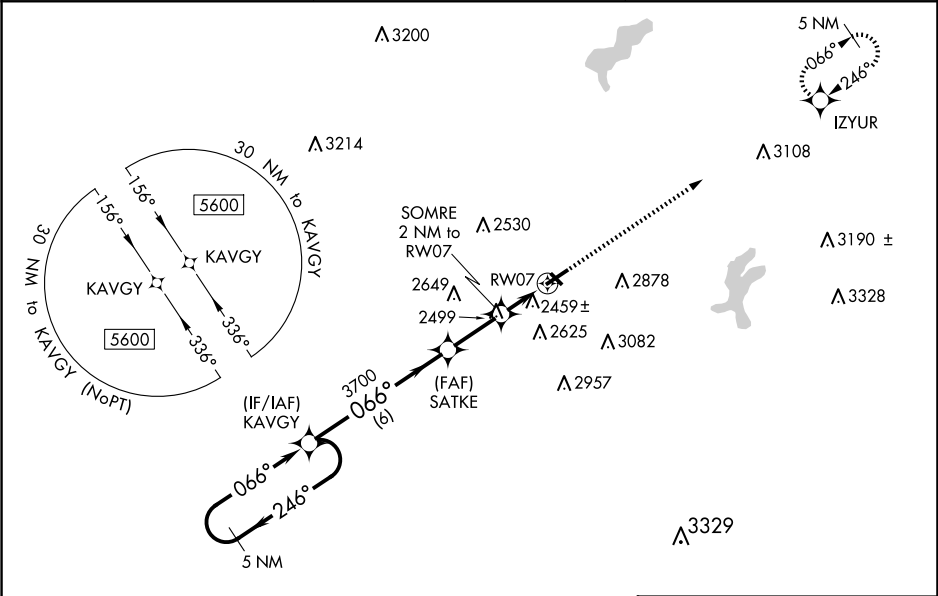
▼

NA

Baro-VNAV and VDP NA when using Johnstown altimeter setting. For uncompensated Baro-VNAV systems, LNAV/VNAV NA below -19°C (-2°F) or above 53°C (128°F). DME/DME RNP-0.3 NA. Circling Rwy 25 NA at night. Circling to Rwy 14-32 NA. When local altimeter setting not received, use Johnstown altimeter setting and increase all DA 44 feet and all MDA 60 feet. Increase LPV all Cats visibility 1/8 mile and LNAV/VNAV all Cats visibility 1/4 mile.

MISSED APPROACH:
Climb to 5200 direct IZYUR and hold.

AWOS-3P 133.8	JOHNSTOWN APP CON ★ 121.2 299.2	UNICOM 122.8 (CTAF) 0
-------------------------	---	---------------------------------



ELEV 2275

TDZE 2275

5 NM Holding Pattern

KAVGY

SATKE

SOMRE 2 NM to RW07

5200 IZYUR

GP 3.00° TCH 56

3700

2960*

*1.2 NM to RW07

*LNAV only

6 NM

2.3 NM

0.8

1.2

CATEGORY	A	B	C	D
LPV DA		2525-1	250 (300-1)	
LNAV/VNAV DA		2640-1 1/8	365 (400-1 1/8)	
LNAV MDA	2720-1	445 (500-1)	2720-1 3/8	445 (500-1 3/8)
CIRCLING	2820-1 545 (600-1)	2920-1 645 (700-1)	3460-3 1185 (1200-3)	3520-3 1245 (1300-3)

MIRL Rwy 7-25

REIL Rwy 7 and 25 0