

NE-4, 10 JUL 2025 to 07 AUG 2025

SOMERSET, PENNSYLVANIA

AL-5992 (FAA)

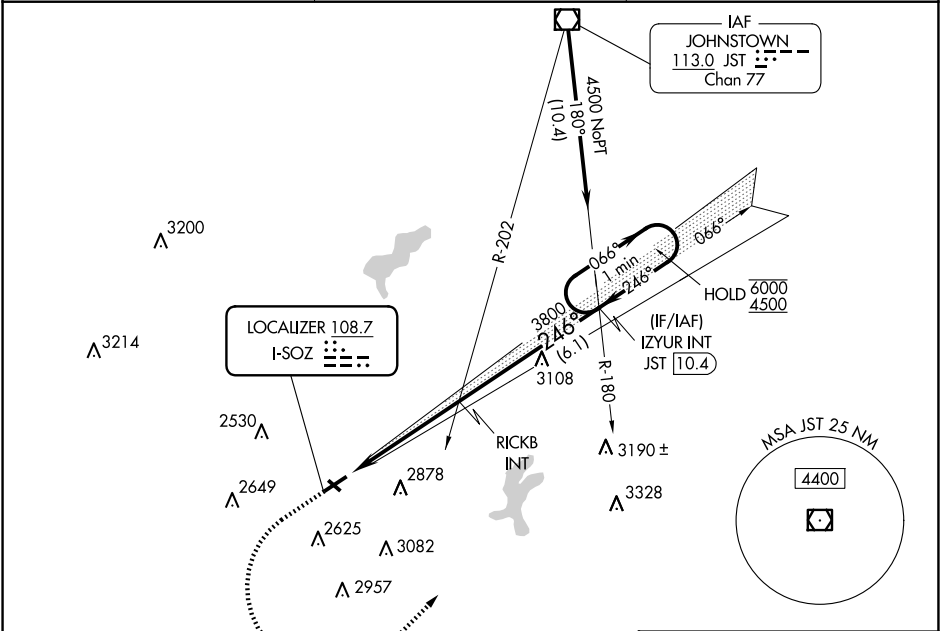
25107

LOC I-SOZ <b>108.7</b>	APP CRS <b>246°</b>	Rwy Idg TDZE Apt Elev	<b>5002</b> <b>2240</b> <b>2275</b>
---------------------------	------------------------	-----------------------------	---

LOC RWY 25  
SOMERSET COUNTY (2G9)

DME required.	MISSED APPROACH: Climb to 3400 then climbing left turn to 4500 on heading 055° and JST VOR/DME R-180 to IZYUR INT/JST 10.4 DME and hold.
<div><div>▼</div><div>▲</div></div> Rwy 25 helicopter visibility reduction below 1 SM NA. Circling NA to Rwys 14 and 32. Procedure NA at night.	

AWOS-3P <b>133.8</b>	JOHNSTOWN APP CON ★ <b>121.2 299.2</b>	UNICOM <b>122.8 (CTAF) 0</b>
-------------------------	---	---------------------------------



ELEV 2275		TDZE 2240		
3400	4500	JST R-180	IZYUR INT	
↑	hdg 055°			
RICKB INT		IZYUR INT JST 10.4	One Minute Holding Pattern	
3800		066°	6000	
246°		246°	4500	
4.9 NM		6.1 NM		
CATEGORY	A	B	C	D
S-25	2860-1	620 (600-1)	2860-1¾	620 (600-1¾)
CIRCLING	2860-1 585 (600-1)	2920-1 645 (700-1)	3520-3	1245 (1300-3)

MIRL Rwy 7-25 0

REIL Rwys 7 and 25 0

FAF to MAP 4.9 NM

Knots	60	90	120	150	180
Min:Sec	4:54	3:16	2:27	1:58	1:38

SOMERSET, PENNSYLVANIA  
Amdt 5 17APR25

40°02'N-79°01'W

SOMERSET COUNTY (2G9)  
LOC RWY 25

NE-4, 10 JUL 2025 to 07 AUG 2025