

WAAS

CH **86237**

**W21A**

APP CRS

**213°**

Rwy Idg

**5000**

TDZE

**75**

Apt Elev

**75**

**RNAV (GPS) RWY 21**

MARTIN COUNTY (MCZ)

RNP APCH - GPS.

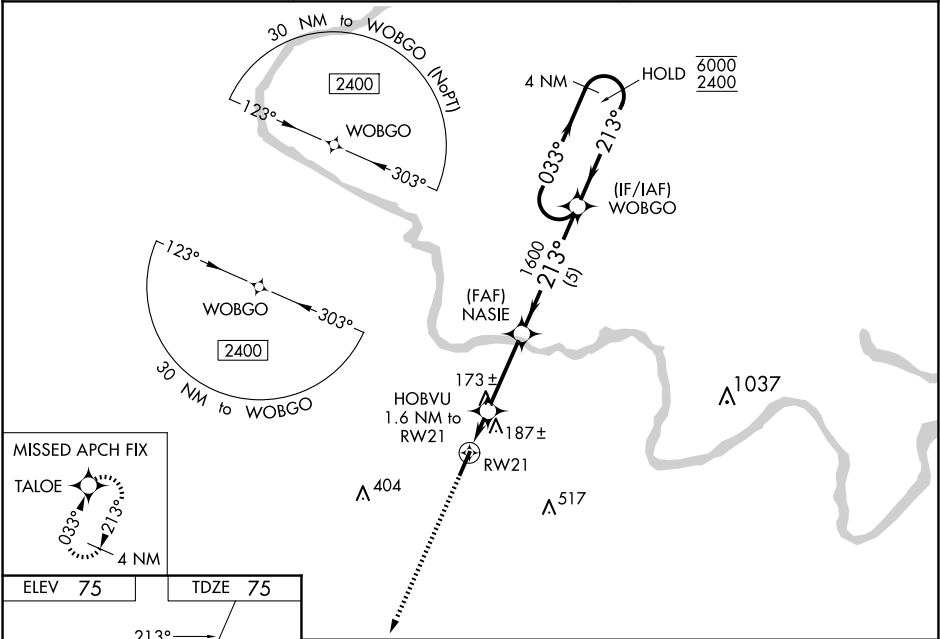
▼

▲

Circling Rwy 3 NA at night. For uncompensated Baro-VNAV systems, LNAV/VNAV NA below -15°C or above 54°C.

MISSED APPROACH: Climb to 2400 direct TALOE and hold, continue climb-in-hold to 2400.

AWOS-3P <b>118.65</b>	WASHINGTON CENTER <b>123.85 279.65</b>	UNICOM <b>122.8 (CTAF) 0</b>
--------------------------	---	---------------------------------



ELEV 75

TDZE 75

213°

21

5000 X 75

3

2400

TALOE

VGSI and RNAV glidepath not coincident (VGSI Angle 3.00/TCH 24).

HOBVU 1.6 NM to RW21

NASIE 1600

1.1 NM to RW21

RW21

640

1600

WOBGO

4 NM Holding Pattern

033° → 6000

← 213° 2400

GP 3.00° TCH 45

CATEGORY	A	B	C	D
LPV DA		383-1	308 (400-1)	
LNAV/VNAV DA		343-1	268 (300-1)	
LNAV MDA		440-1	365 (400-1)	
CIRCLING	500-1 425 (500-1)	540-1 465 (500-1)	680-1¾ 605 (700-1¾)	880-2½ 805 (900-2½)