

WAAS CH 40328 W25A	APP CRS 251°	Rwy Idg TDZE 781 Apt Elev 781	5001
--	------------------------	---	-------------

RNAV (GPS) RWY 25

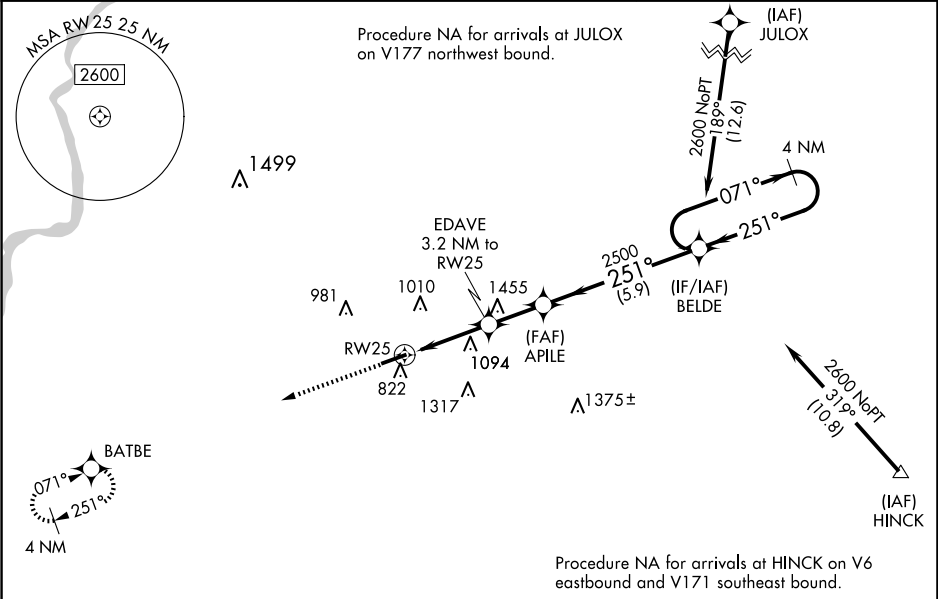
ROCHELLE MUNI/KORITZ FLD (RPJ)

⚠

Baro-VNAV NA when using Chicago/Rockford Intl altimeter setting. For uncompensated Baro-VNAV systems, LNAV/VNAV NA below -16°C (4°F) or above 54°C (130°F). DME/DME RNP-0.3 NA. When local altimeter setting not received, use Chicago/Rockford Intl altimeter setting: increase LPV DA to 1079 feet and LNAV/VNAV DA to 1152 feet and all MDA 60 feet; increase LNAV/VNAV visibility all Cats and LNAV Cat C/D visibility ½ mile; increase Circling Cat C visibility ¼ mile. Helicopter visibility reduction below ¾ SM NA. VDP NA when using Chicago/Rockford Intl altimeter setting.

MISSED APPROACH:
Climb to 2600 direct BATBE and hold.

AWOS-3 125.2	ROCKFORD APP CON 126.0 327.0	UNICOM 122.975 (CTAF) 0
------------------------	--	-----------------------------------



ELEV 781	TDZE 781
-----------------	-----------------

2600

BATBE

VGSI and RNAV glidepath not coincident (VGSI Angle 4.00/TCH 28).

4 NM

Holding Pattern

*LNAV only

EDAVE

3.2 NM to RW25

APILE

2500

251°

071°

2600

GP 3.00°

TCH 40

1.3 NM

1.9 NM

2.1 NM

5.9 NM

1840

2500

251°

251°

5001 X 75

MIRL Rwy 7-25 0

REIL Rwy 7 and 25 0

CATEGORY	A	B	C	D
LPV DA	1031-1		250 (300-1)	
LNAV/VNAV DA	1104-1½		323 (400-1½)	
LNAV MDA	1360-1	579 (600-1)	1360-1½	579 (600-1½)
CIRCLING	1360-1	579 (600-1)	1680-2¾ 899 (900-2¾)	1820-3 1039 (1100-3)