

WAAS CH 40324 W19A	APP CRS 193°	Rwy Idg TDZE 804 Apt Elev 817
--	------------------------	---

RNAV (GPS) RWY 19

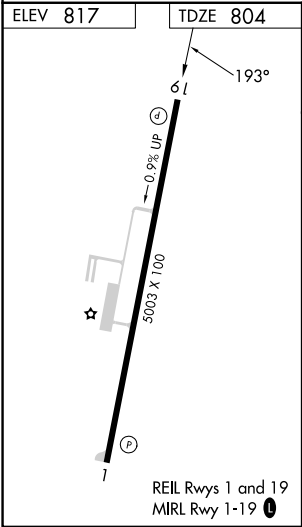
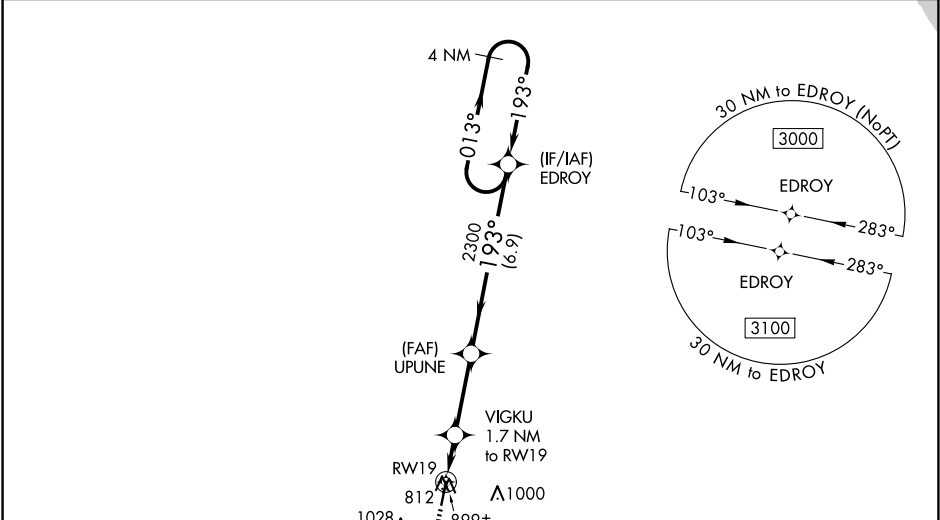
DOUGLAS HUNTER FLD (1M5)

RNP APCH.

For uncompensated Baro-VNAV systems, LNAV/VNAV NA below -16°C or above 54°C. Baro-VNAV and VDP NA when using Bowling Green altimeter setting. When local altimeter setting not received, use Bowling Green altimeter setting and increase LPV DA to 1144 and all visibilities ¼ mile; increase all LNAV/VNAV DA to 1184 and all visibilities ¼ mile; increase all MDA 100 feet and increase LNAV Cat C/D visibility ⅜ mile.

MISSED APPROACH: Climb to 3000 direct COLBU and hold.

AWOS-3PT 118.175	NASHVILLE APP CON 119.35 372.0	UNICOM 122.975 (CTAF) 0
----------------------------	--	--



ELEV 817		TDZE 804	
1300 A		COLBU	
3000		VGSi and RNAV glidepath not coincident.	
*LNAV only.		4 NM Holding Pattern	
RW19		EDROY	
1.2 NM		0.5	
1.2 NM to RW19		3 NM	
1.2 NM to RW19		6.9 NM	
1340*		2300	
2300		2300	
193°		013°	
193°		193°	
GP 3.00°		TCH 40	
CATEGORY	A	B	C
LPV DA	1054-1 250 (300-1)		
LNAV/VNAV DA	1094-1½ 290 (300-1½)		
LNAV MDA	1160-1 356 (400-1)		