

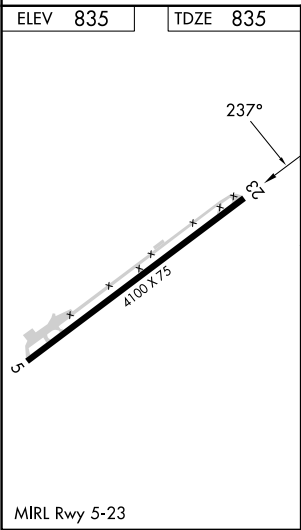
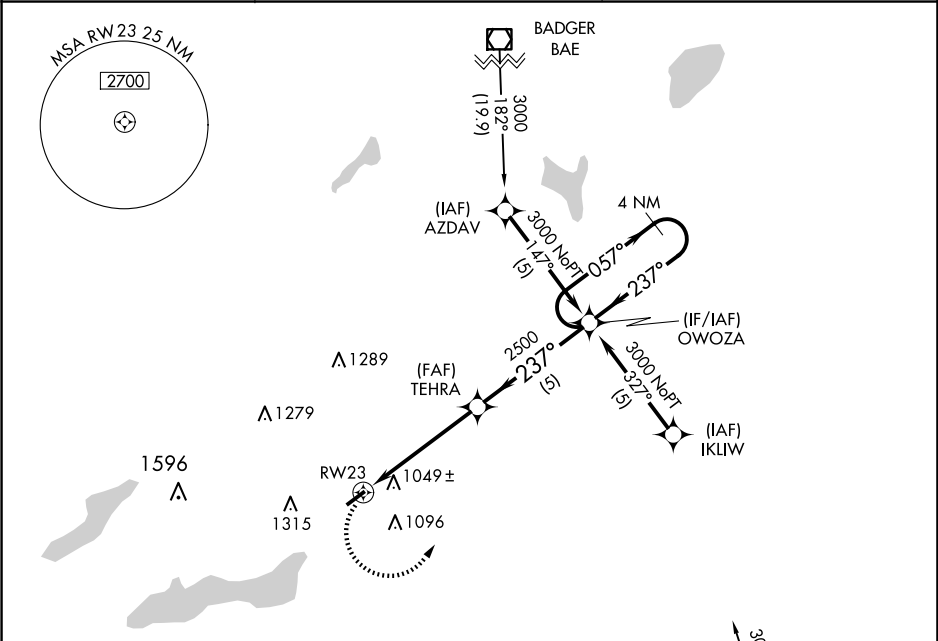
APP CRS	Rwy Idg	4100
237°	TDZE	835
	Apt Elev	835

RNAV (GPS) RWY 23

GRAND GENEVA RESORT (C02)

<div><div>▼</div><div>NA</div></div>	DME/DME RNP-0.3 NA. Procedure NA at night. Rwy 23 helicopter visibility reduction below 1 SM NA. Use Kenosha altimeter setting.	MISSED APPROACH: Climbing left turn to 3000 direct OWOZA and hold.
--------------------------------------	---	--

ENW ASOS 127.175	MILWAUKEE APP CON 135.875	UNICOM 122.8 (CTAF)
---------------------	------------------------------	------------------------



3000	OWOZA	Visual Segment - Obstacles.		
		4 NM Holding Pattern		
		TEHRA	OWOZA	3000
5.1 NM		5 NM	057° ←237°	
CATEGORY	A	B	C	D
LNAV MDA	1360-1	525 (600-1)	1360-1½ 525 (600-1½)	NA
CIRCLING	1500-1 665 (700-1)	1520-1 685 (700-1)	1740-2¾ 905 (1000-2¾)	NA