


VOR/DME or TACAN Y RWY 21

VORTAC OCN 115.3 Chan 100		APCH CRS 206°	Rwy Idg 6005 TDZE 78 Arpt Elev 78	[USN]	CAMP PENDLETON MCAS (MUNN FLD) (KNFG)		
<p>* When ALS inop, increase CAT A vis to 1¼ miles, CAT B vis to 1½ miles, CAT CD vis to 3 miles. ** Circling Rwy 3 not authorized at night when VGSi inop.</p>					<p>MISSED APPROACH: Climb to 2500 direct OCN VORTAC then direct WIPAM and hold.</p>		
ATIS ★ 285.45	APP CON 127.3 323.0		TOWER ★ 128.775 0 340.2		GND CON 134.675 360.2	CLNC DEL 134.675 271.6	ASR\ PAR

Visibility reduction by helicopters not authorized.

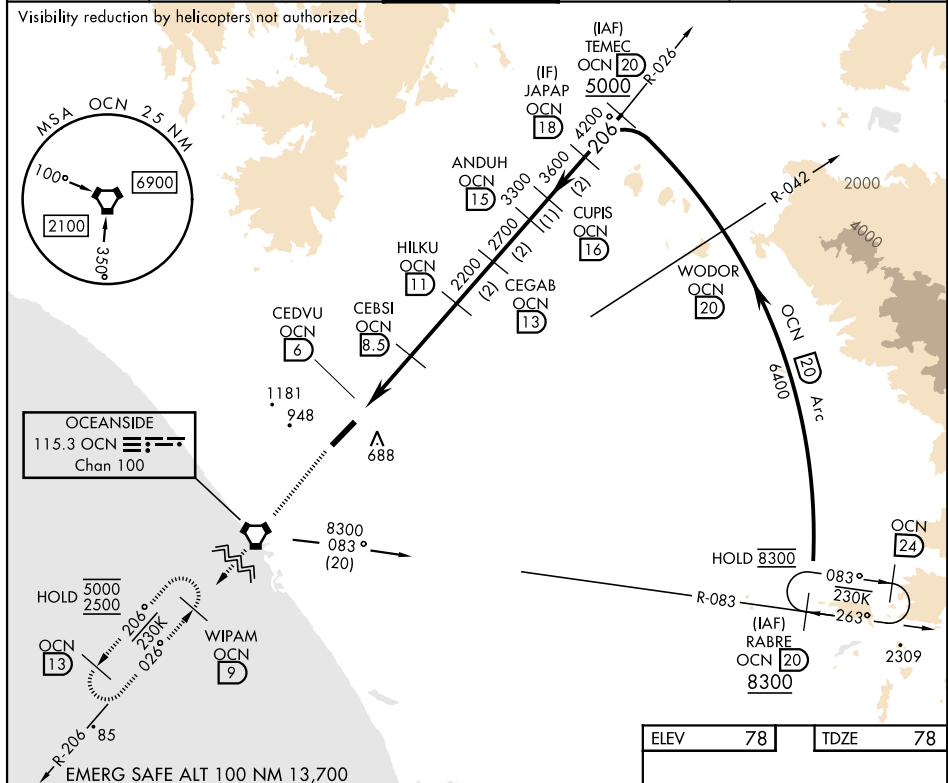


Figure 1: Example of a VGS (Vertical Guidance System) chart. The chart shows a flight path starting from a 2500 ft altitude, descending to a 1200 ft altitude, and then climbing to a 4200 ft altitude. The path is divided into four segments: A, B, C, and D. Segment A is a 2.5 NM climb from 1200 ft to 1120-1 ft. Segment B is a 2.5 NM climb from 1120-1 ft to 1120-1 1/4 ft. Segment C is a 2.5 NM climb from 1120-1 1/4 ft to 1120-1 1/2 ft. Segment D is a 2.5 NM climb from 1120-1 1/2 ft to 1500-3 ft. The chart also shows various navigation aids (OCN, WIPAM, VGS) and their associated frequencies (e.g., 2500, 1200, 4200).

CATEGORY	A	B	C	D
S-21 *	1120-1 1042 (1100-1)	1120-1 1/4 1042 (1100-1 1/4)	1120-2 1/2 1042 (1100-2 1/2)	
CIRCLING **	1120-1 1/4 1042 (1100-1 1/4)	1260-1 1/2 1182 (1200-1 1/2)	1500-3	1422 (1500-3)

