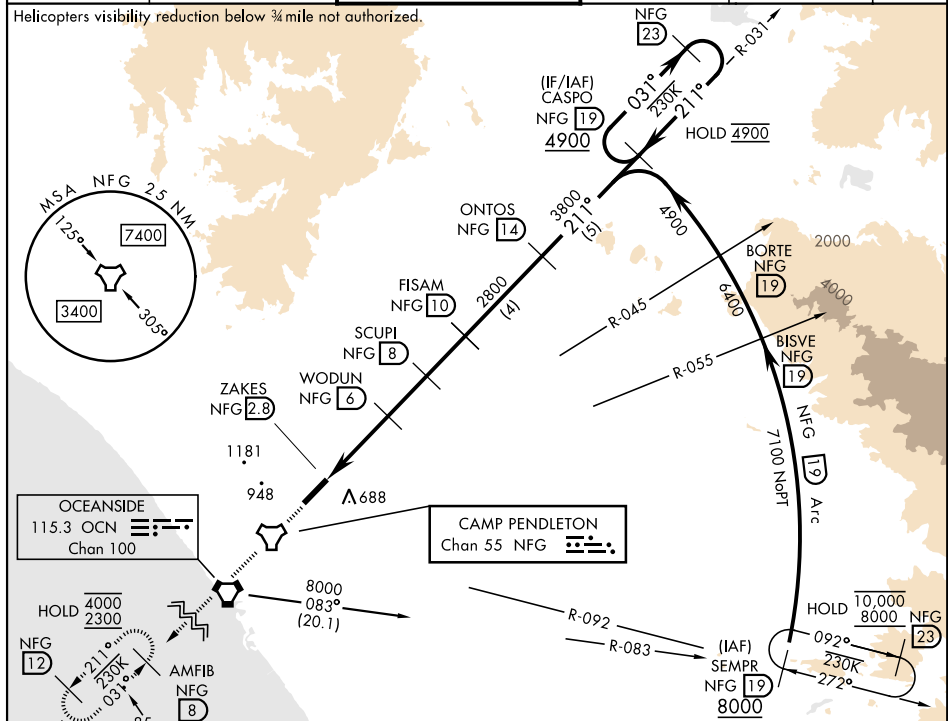


TACAN Z RWY 21

TACAN NFG Chan 55	APCH CRS 211°	Rwy Idg 6005 TDZE 78 Arpt Elev 78	[USN]	CAMP PENDLETON MCAS (MUNN FLD) (KNFG)			
<div>▼ * When ALS inop, increase CAT A vis to 1¼ mile, CAT B vis to 1½ miles, CAT CD vis to 3 miles. ** Circling Rwy 3 not authorized at night when VGSI inop.</div>			<div>SALSF A2</div>	MISSED APPROACH: Climb to 2300 direct NFG TACAN then direct AMFIB and hold.			
ATIS ★ 285.45	SOCAL APP CON 127.3 323.0		TOWER ★ 128.775 0 340.2		GND CON 134.675 360.2	CLNC DEL 134.675 271.6	ASR/PAR

Helicopters visibility reduction below 3/4 mile not authorized.



SW-3, 10 JUL 2025 to 07 AUG 2025

EMERG SAFE ALT 100 NM 13,700

Navigation Points and Altitudes:

- ZAKES NFG 2.8
- WODUN NFG 6
- SCUPI NFG 8
- FISAM NFG 10
- ONTOS NFG 14
- CASPO NFG 19
- NFG 23

Altitude Table:

CATEGORY	A	B	C	D
S-21*	1120-1 1042 (1100-1)	1120-1¼ 1042 (1100-1¼)	1120-2½	1042 (1100-2½)
C CIRCLING**	1120-1¼ 1042 (1100-1¼)	1260-1½ 1182 (1200-1½)	1500-3	1422 (1500-3)

Diagram Details:

- Runway: 3-21, 6000 x 221
- Heading: 211°
- Altitude: 211°
- Distance: 0.1, 3.2 NM, 2 NM, 2 NM
- Angle: 3.46° TCH 53
- Obstacles: A2, P, TWR

OCEANSIDE, CALIFORNIA

33° 18' N-117° 21' W

CAMP PENDLETON MCAS (MUNN FLD) (KNFG)

Amdt 7 12JUN25

TACAN Z RWY 21