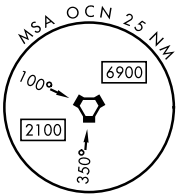
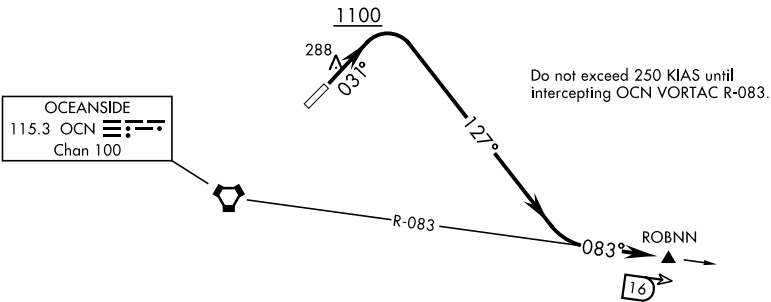


ATIS ★285.45  
CLNC DEL  
134.675 271.6  
GND CON  
134.675 360.2  
TOWER ★  
128.775 340.2  
SOCAL DEP CON  
127.3 323.0

[USN]

Rwy	Knots	60	120	180	240	300	360
3	V/V(fpm)	378	756	1134	1512	1890	2268

Minimum Climb Rate to 1000



DEPARTURE ROUTE DESCRIPTION

TAKEOFF RWY 3: Climb on heading 031° to 1100 then climbing right turn heading 127° to intercept OCN VORTAC R-083 to ROBNN. Cross ROBNN at 5000 or as directed by ATC.

SW-3, 10 JUL 2025 to 07 AUG 2025

SW-3, 10 JUL 2025 to 07 AUG 2025