

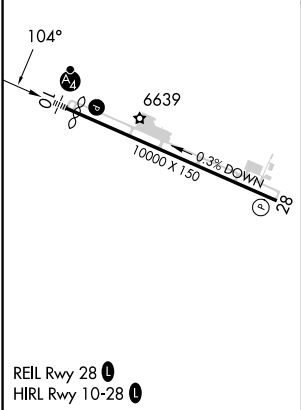
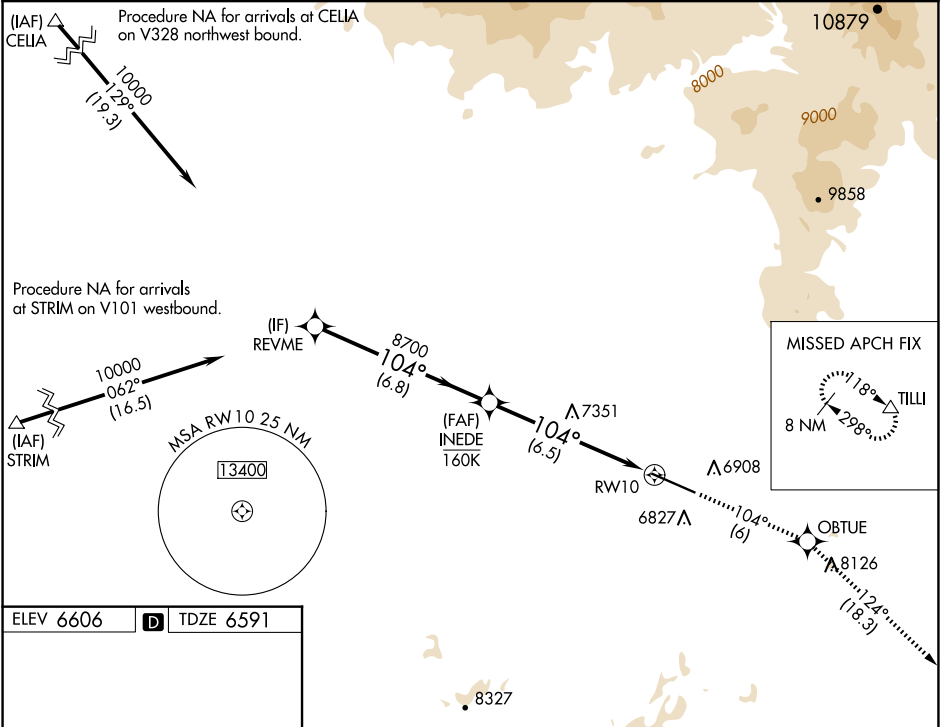
APP CRS	Rwy Ldg	9490
104°	TDZE	6591
	Apt Elev	6606



RNAV (RNP) Z RWY 10

YAMPA VALLEY (HDN)

RNP AR APCH-GPS.	MALSF	MISSED APPROACH: Climb to 13800 on track 104° to OBTUE and on track 124° to TILLI and hold, continue climb-in-hold to 13800. *Missed approach requires minimum climb of 286 feet per NM to 8900.
<div><div>▼</div><div>▲</div></div> Rwy 10 helicopter visibility reduction below ¾ SM NA. For uncompensated Baro-VNAV systems, procedure NA below -28°C or above 54°C. Inop table does not apply to RNP 0.30. For inop ALS, increase RNP 0.20 all Cats visibility to 2 SM.	<div><div>⬇</div><div>⬆</div></div>	

AWOS-3PT 119.275	DENVER CENTER 120.475 235.975	UNICOM 123.0 (CTAF) 0
---------------------	----------------------------------	--------------------------



REVME		13800 ↑ tr 104°		OBTUE 	TILLI tr 124° 
10000	104°		8700	RW10	
GP 3.00° TCH 55		8700			
6.8 NM		6.5 NM			
CATEGORY	A	B	C	D	
RNP 0.20 DA*	7016-1 425 (500-1)				
RNP 0.20 DA	7344-1⅞ 753 (800-1⅞)				
RNP 0.30 DA	7949-5 1358 (1400-5)				
AUTHORIZATION REQUIRED					

SW-1, 10 JUL 2025 to 07 AUG 2025

SW-1, 10 JUL 2025 to 07 AUG 2025