

VOR/DME HUT

116.8

APP CRS

322°

Rwy Idg

TDZE

Apt Elev

N/A

N/A

1692

VOR-A

LYONS-RICE COUNTY MUNI (LYO)

DME required.

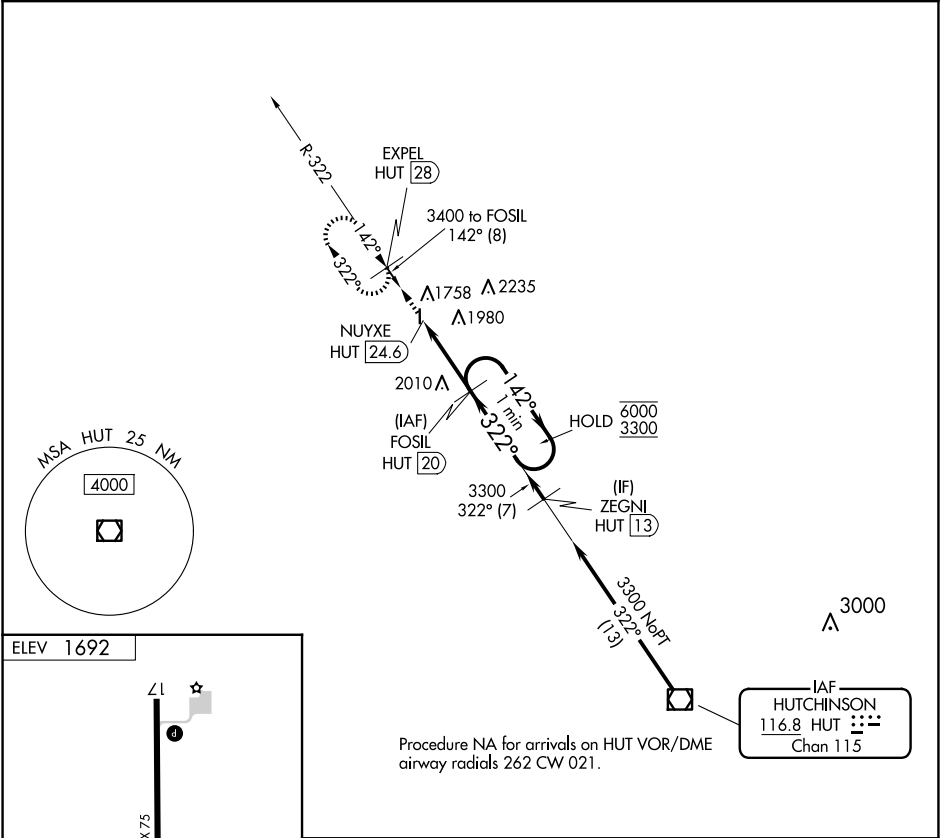
⚠

⚠

Circling to Rwy 17 NA at night. When local altimeter setting not received, use Hutchinson altimeter setting.

MISSED APPROACH: Climb to 3400 on HUT VOR/DME R-322 to EXPEL/HUT 28 DME and hold.

AWOS-3P 119.925	KANSAS CITY CENTER 118.8 322.425	UNICOM 122.8 (CTAF) 0
--------------------	-------------------------------------	--------------------------



ELEV 1692

4400 X 75

0.4% UP

35

MIRL Rwy 17-35 0

REIL Rws 17 and 35 0

3400

HUT R-322

EXPEL HUT 28

NUYXE HUT 24.6

FOSIL HUT 20

One Minute Holding Pattern

142°

322°

6000

3300

4.6 NM

CATEGORY	A	B	C	D
<div><div>CIRCLING</div></div>	2400-1	708 (800-1)	NA	