

WAAS CH 42639 W35A	APP CRS 354°	Rwy Idg TDZE Apt Elev	4400 1689 1692
--	------------------------	-----------------------------	---

RNAV (GPS) RWY 35

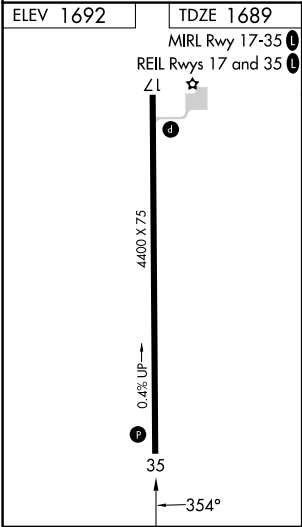
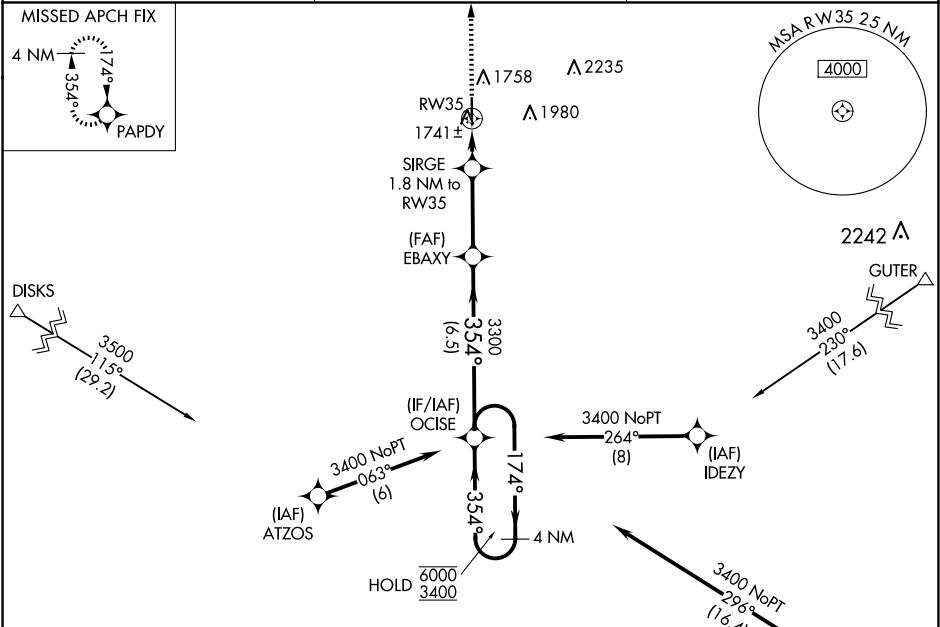
LYONS-RICE COUNTY MUNI (LYO)

RNP APCH.

▼ Baro-VNAV and VDP NA when using Hutchinson altimeter setting. For uncompensated Baro-VNAV systems, LNAV/VNAV NA below -18°C or above 54°C. Circling Rwy 17 NA at night. When local altimeter setting not received, use Hutchinson altimeter setting.

MISSED APPROACH:
Climb to 3400 direct PAPDY and hold.

AWOS-3P 119.925	KANSAS CITY CENTER 118.8 322.425	UNICOM 122.8 (CTAF) 0
---------------------------	--	---------------------------------



Procedure NA for arrival on HUT VOR/DME
airway radials 230 CW 021.

3400 PAPDY

VGSI and RNAV glidepath not coincident
(VGSI Angle 3.00/TCH 40).

4 NM Holding Pattern

*LNAV only

1.2 NM to RW35

1.8 NM to RW35

3300

354°

174°

6000

3400

GP 3.00°

TCH 45

CATEGORY	A	B	C	D
LPV DA	2016-1 1/8	327 (400-1 1/8)	NA	
LNAV/VNAV DA	2016-1 1/8	327 (400-1 1/8)	NA	
LNAV MDA	2080-1	391 (400-1)	NA	
CIRCLING	2260-1	568 (600-1)	NA	