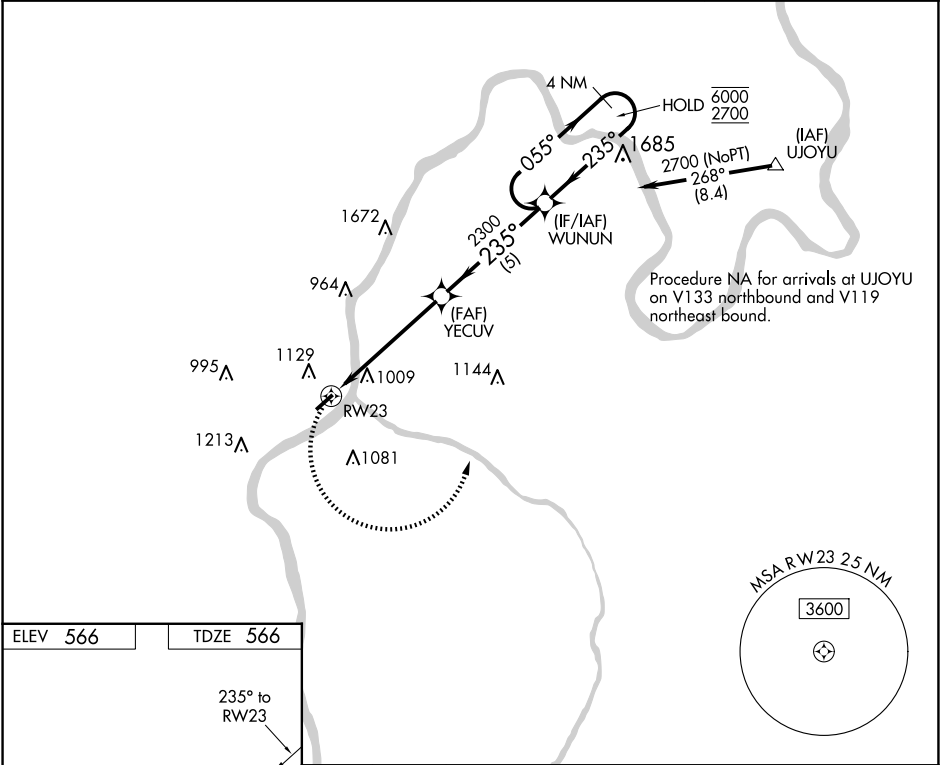


APP CRS	Rwy Idg	3999
235°	TDZE	566
	Apt Elev	566

RNAV (GPS) RWY 23

GALLIA-MEIGS RGNL (GAS)

RNP APCH-GPS.		MISSED APPROACH: Climbing left turn to 2700 direct WUNUN and hold.	
NA Helicopter visibility reduction below 1 SM NA. Procedure NA at night.			
AWOS-3PT 119.925	HUNTINGTON APP CON 128.4 270.1	CLNC DEL 124.55	UNICOM 123.0 (CTAF) 0



3999 X 75

3.00° TCH 40

235°

2700 WUNUN

YECUV

2300

235°

055°

6000

2700

4 NM Holding Pattern

WUNUN

5.3 NM

5 NM

CATEGORY	A	B	C	D
LNAV MDA	1320-1 754 (800-1)	1320-1¼ 754 (800-1¼)	1320-2 754 (800-2)	NA
C CIRCLING	1440-1¼ 874 (900-1¼)		1440-2½ 874 (900-2½)	NA

MIRL Rwy 5-23

REIL Rwy 23

EC-2, 10 JUL 2025 to 07 AUG 2025

EC-2, 10 JUL 2025 to 07 AUG 2025