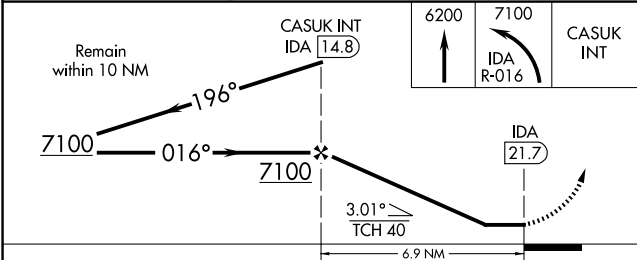
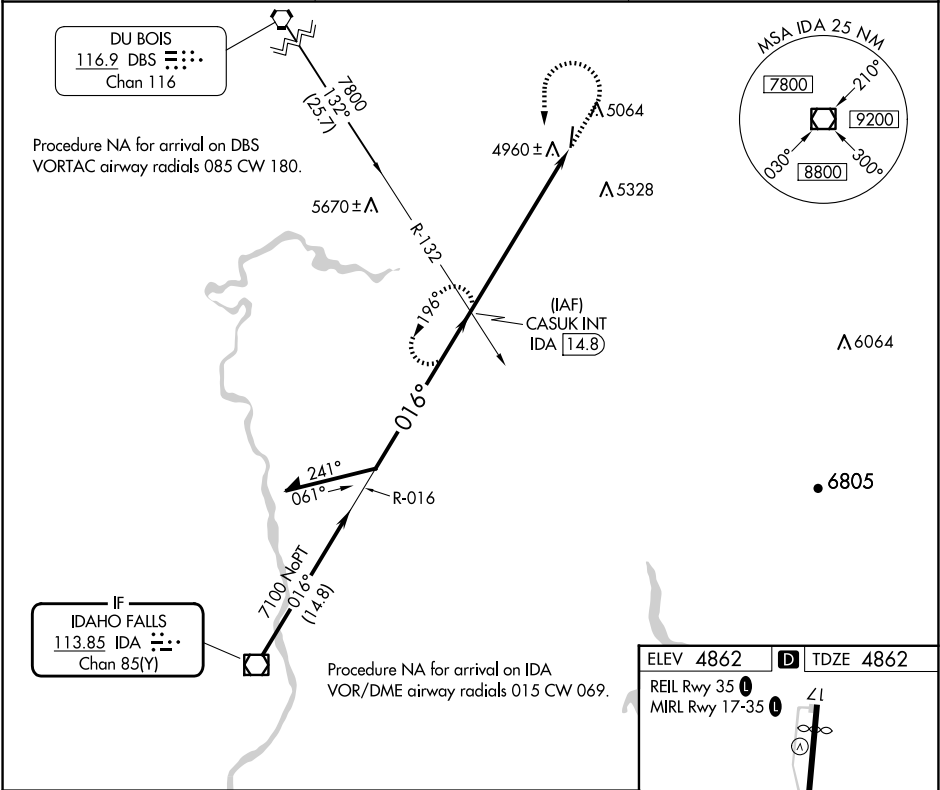


VOR/DME IDA 113.85 Chan 85 (Y)	APP CRS 016°	Rwy Ldg TDZE Apt Elev 3900 4862 4862
--	------------------------	--

VOR RWY 35
REXBURG-MADISON COUNTY (R.XE)

▼ Rwy 35 helicopter visibility reduction below 1 SM NA. ▲ Straight-in Rwy 35 NA at night, Circling Rwy 35 NA at night.	MISSED APPROACH: Climb to 6200 then climbing left turn to 7100 on IDA R-016 to CASUK INT/IDA 14.8 DME and hold.
---	---

ASOS 135.075	SALT LAKE CENTER 128.35 239.25	UNICOM 122.8 (CTAF) 0
------------------------	--	--



CATEGORY	A	B	C	D
S-35	5680-1 818 (900-1)	5680-1¼ 818 (900-1¼)	5680-2½ 818 (900-2½)	
CIRCLING	5680-1¼ 818 (900-1¼)		5680-2½ 818 (900-2½)	5760-3 898 (900-3)

