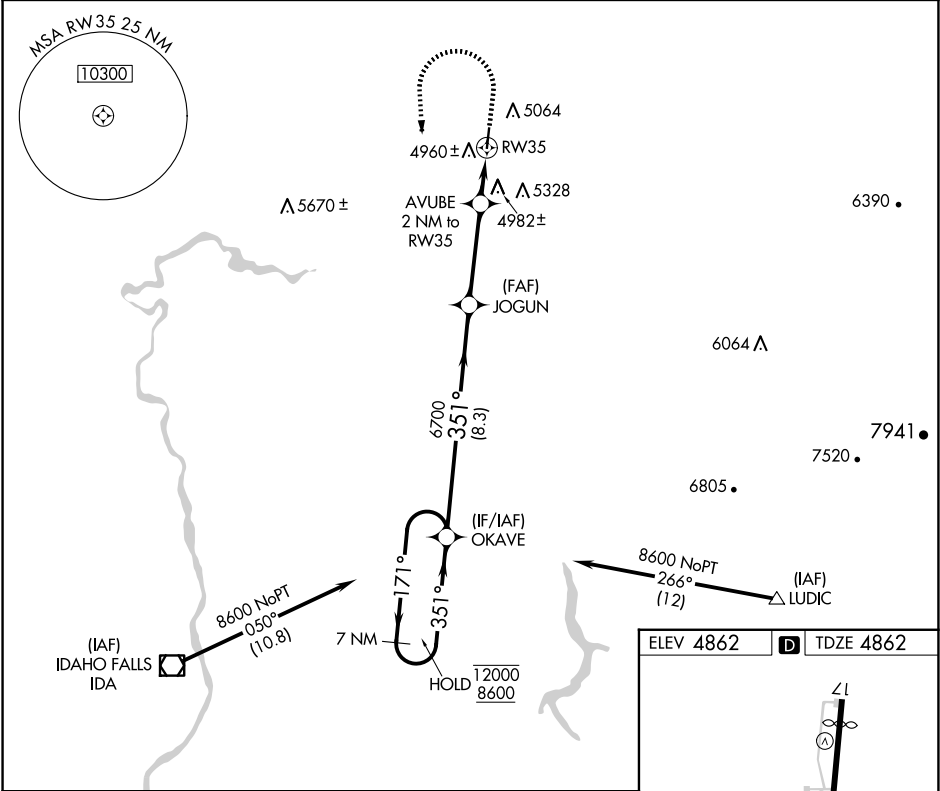


APP CRS	Rwy Ldg	3900
351°	TDZE	4862
	Apt Elev	4862

RNAV (GPS) RWY 35
REXBURG-MADISON COUNTY (R.XE.)

RNP APCH - GPS.	MISSED APPROACH: Climb to 5900 then climbing left turn to 8600 direct OKAVE and hold.
▼ ▲ Rwy 35 helicopter visibility reduction below ¾ SM NA.	

ASOS 135.075	SALT LAKE CENTER 128.35 239.25	UNICOM 122.8 (CTAF) 0
-----------------	-----------------------------------	--------------------------



CATEGORY	A	B	C	D
LNNAV MDA	5240-1 378 (400-1)			
CIRCLING	5380-1 518 (600-1)	5580-1 718 (800-1)	5680-2½ 818 (900-2½)	5760-3 898 (900-3)

