

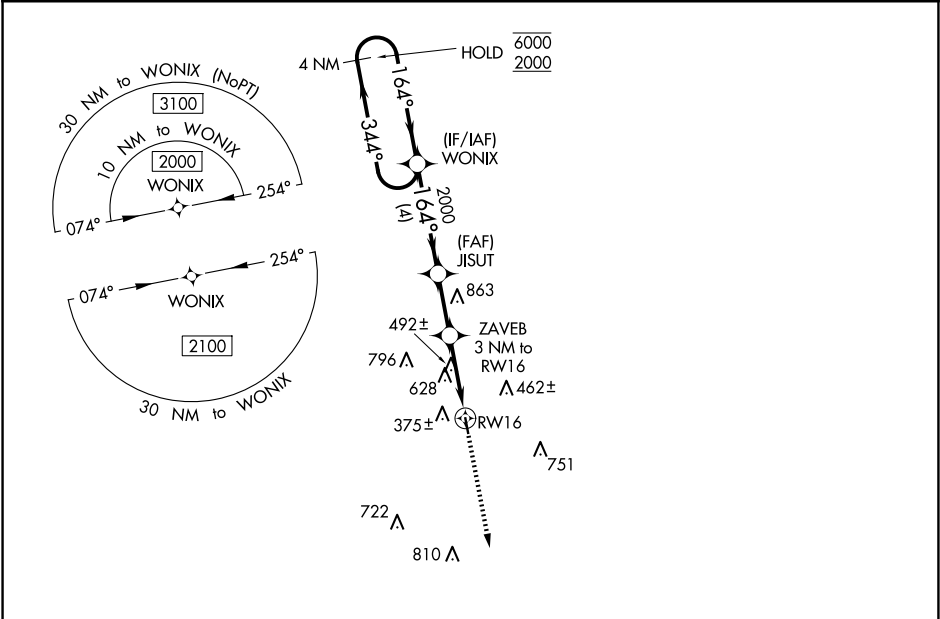
WAAS CH <b>87125</b> <b>W16A</b>	APP CRS <b>164°</b>	Rwy Idg TDZE Apt Elev	<b>3218</b> <b>289</b> <b>289</b>
--	------------------------	-----------------------------	---

RNAV (GPS) RWY 16

KENEDY RGNL (2R.9)

RNP APCH.	MISSED APPROACH: Climb to 2000 direct FORLU and hold.
▼ Procedure NA at night. When local alimeter setting not received, use Pleasanton alimeter setting. Rwy 16 helicopter visibility reduction below 1 SM NA.	

AWOS 3-PT <b>118.45</b>	HOUSTON CENTER <b>134.6 322.5</b>	UNICOM <b>123.0 (CTAF) 0</b>
----------------------------	--------------------------------------	---------------------------------



4 NM Holding Pattern		Visual Segment - Obstacles.		2000	FORLU
6000 ← 344°		164° → 2000		↑	✱
2000		1260		RW16	
4 NM		2.3 NM		3 NM	
CATEGORY	A	B	C	D	
LP MDA	860-1	571 (600-1)	NA		
LNAV MDA	1040-1 751 (800-1)	1040-1¼ 751 (800-1¼)	NA		

ELEV 289

TDZE 289

164°

91

3218 x 60

0.5% UP

34

REIL Rwy 16  
MIRL Rwy 16-34 0