

| | | |
|--|------------------------|---|
| WAAS CH 93627 W30A | APP CRS 300° | Rwy Idg TDZE 1456 Apt Elev 1456 |
|--|------------------------|---|

RNAV (GPS) RWY 30

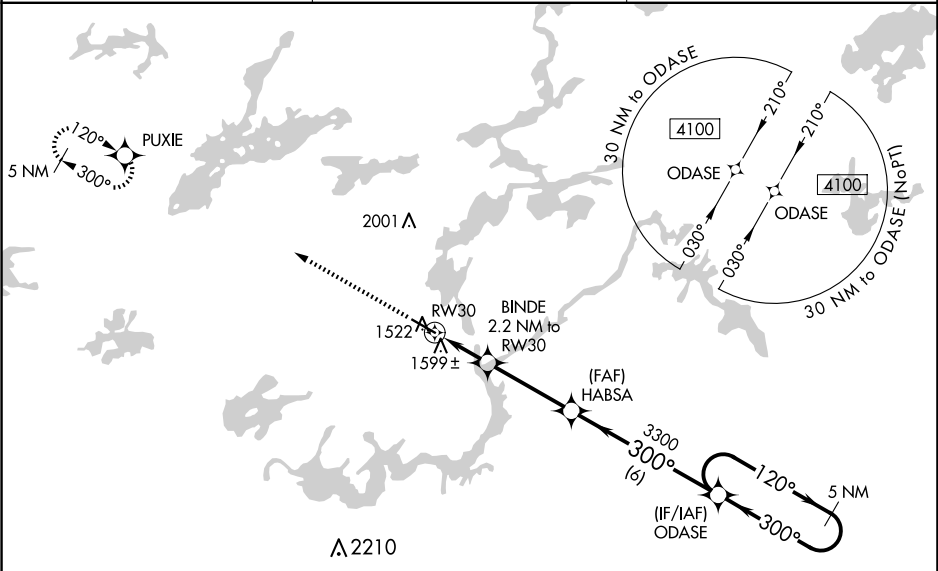
ELY MUNI (ELO)

⚠

Baro-VNAV NA when using Cook altimeter setting. For uncompensated Baro-VNAV systems, LNAV/VNAV NA below -17°C (2°F) or above 34°C (93°F). DME/DME RNP-0.3 NA. Helicopter visibility reduction below ¾ SM NA. When local altimeter setting not received, use Cook altimeter setting and increase all DA/MDA 100 feet; increase LPV visibility ½ mile all Cats, LNAV/VNAV visibility ¾ mile all Cats, and LNAV Cat C/D visibility ¼ mile.

MISSED APPROACH: Climb to 4100 direct PUXIE and hold.

| | | |
|----------------------------|---|---------------------------------|
| AWOS-3PT 132.025 | MINNEAPOLIS CENTER 127.9 281.45 | UNICOM 122.8 (CTAF) 0 |
|----------------------------|---|---------------------------------|



| | |
|-----------|-----------|
| ELEV 1456 | TDZE 1456 |
|-----------|-----------|

4100

PUXIE

VGSI and RNAV glidepath not coincident (VGSI Angle 3.00/TCH 41).

*LNAV only

BINDE
2.2 NM to
RWY 30

HABSA
3300

ODASE

5 NM
Holding Pattern

120° → 4100
← 300°

GP 3.00°
TCH 52

12

5596 x 100

30

300° to RWY 30

| CATEGORY | A | B | C | D |
|--------------|-----------------------|-----------------------|-------------------------|------------------------|
| LPV DA | 1706-1 250 (300-1) | | | |
| LNAV/VNAV DA | 1780-1 324 (400-1) | | | |
| LNAV MDA | 1860-1 404 (500-1) | | 1860-1½ 404 (500-1½) | |
| CIRCLING | 1920-1 464 (500-1) | 1940-1 484 (500-1) | 1940-1½ 484 (500-1½) | 2360-3 904 (1000-3) |