

WAAS CH <b>86827</b> <b>W12A</b>	APP CRS <b>120°</b>	Rwy Idg TDZE <b>1452</b> Apt Elev <b>1456</b>
--	------------------------	---

RNAV (GPS) RWY 12

ELY MUNI (ELO)

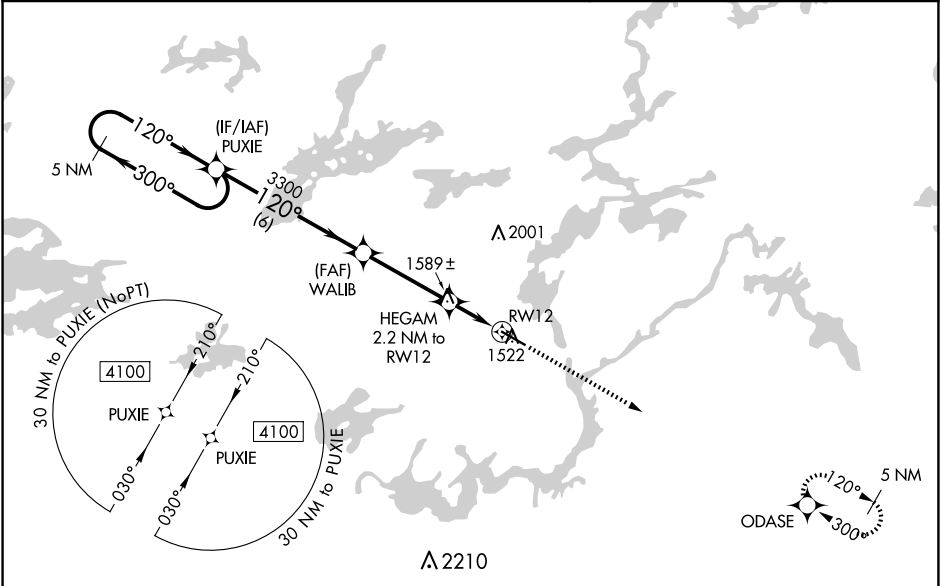
▼

⚠

Baro-VNAV NA when using Cook altimeter setting. For uncompensated Baro-VNAV systems, LNAV/VNAV NA below -17°C (2°F) or above 34°C (93°F). DME/DME RNP-0.3 NA. VDP NA when using Cook altimeter setting. When local altimeter setting not received, use Cook altimeter setting and increase all DA/MDA 100 feet; increase LPV visibility ¼ mile all Cats, LNAV/VNAV visibility ⅜ mile all Cats, and LNAV Cat C and D visibility ¼ mile.

MISSED APPROACH: Climb to 4100 direct ODASE and hold.

AWOS-3PT <b>132.025</b>	MINNEAPOLIS CENTER <b>127.9 281.45</b>	UNICOM <b>122.8 (CTAF) 1</b>
----------------------------	---	---------------------------------



<div><div>ELEV 1456</div><div>TDZE 1452</div></div>				
<div><div><div><div>5 NM Holding Pattern</div><div>4100</div><div>GP 3.00° TCH 40</div></div><div><div>PUXIE</div><div>3300</div></div><div><div>WALIB</div><div>3300</div></div><div><div>HEGAM</div><div>2.2 NM to RW12</div></div><div><div>*2160</div></div></div><div><div><div>4100</div><div>ODASE</div></div><div><div>*LNAV only.</div></div></div><div><div><div>120° to RW12</div><div>5596 X 100</div><div>30</div></div></div><div><div><div>300°</div><div>120°</div><div>120°</div><div>6 NM</div><div>3.5 NM</div><div>1.1 NM</div><div>1.1 NM</div></div></div></div>				
CATEGORY	A	B	C	D
LPV DA	1652-1 200 (200-1)			
LNAV/VNAV DA	1726-1 274 (300-1)			
LNAV MDA	1840-1 388 (400-1)		1840-1½ 388 (400-1½)	
CIRCLING	1920-1 464 (500-1)	1940-1 484 (500-1)	1940-1½ 484 (500-1½)	2360-3 904 (1000-3)
<div><div>MIRL Rwy 12-30 1</div><div>REIL Rws 12 and 30 1</div></div>				