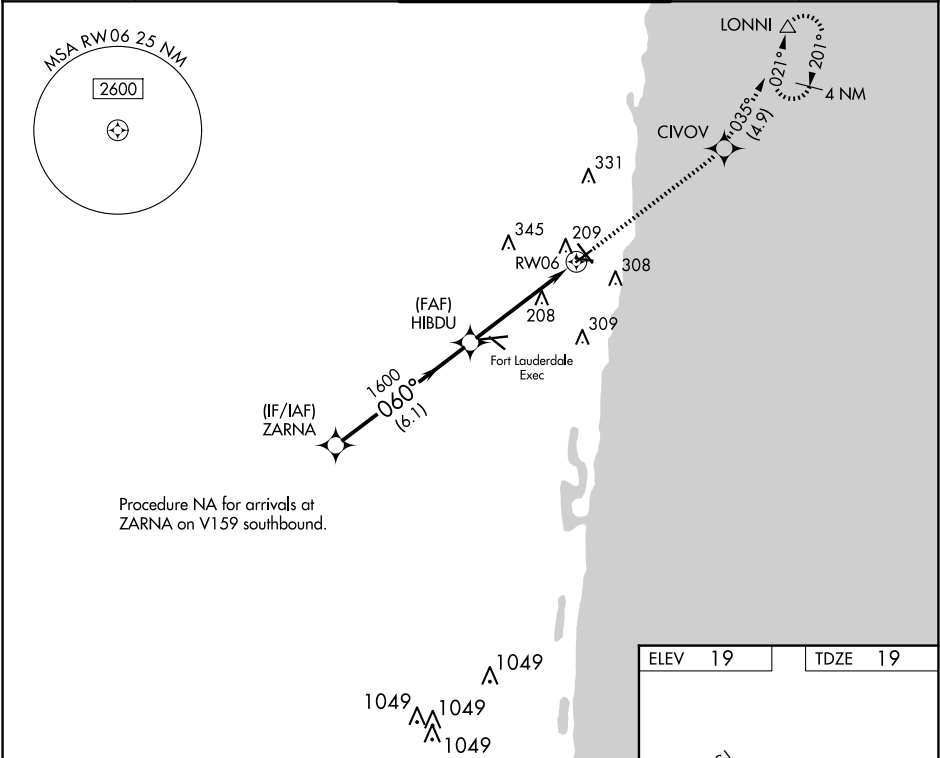


WAAS CH <b>56603</b> <b>W06A</b>	APP CRS <b>060°</b>	Rwy Ldg TDZE <b>19</b> Apt Elev <b>19</b>
--	------------------------	---

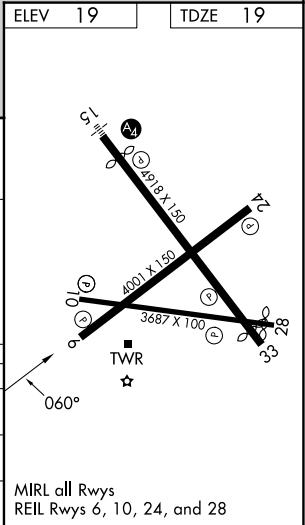
RNAV (GPS) RWY 6  
POMPANO BEACH AIRPARK (PMP)

<div><div></div><div></div></div> <div>DME/DME RNP-0.3 NA. When local altimeter setting not received, use Fort Lauderdale Exec altimeter setting. Helicopter visibility reduction below ¾ SM NA.</div>	MISSED APPROACH: Climb to 2000 direct CIOVO and on track 035° to LONNI and hold.
--	--

ATIS <b>120.55</b>	MIAMI APP CON <b>119.7 306.3</b>	POMPANO BEACH TOWER ★ <b>125.4 (CTAF) 0</b>	GND CON <b>121.9</b>	UNICOM <b>122.95</b>
-----------------------	-------------------------------------	--	-------------------------	-------------------------



VGSI and RNAV glidepath not coincident (VGSI Angle 3.75/TCH 45).				
ZARNA				
2100				
GP 3.00°				
TCH 39				
HIBDU				
2000				
CIVOV				
tr 035°				
LONNI				
*LNAV only.				
*1.2 NM to RW06				
RW06				
6.1 NM				
3.6 NM				
1.2				
CATEGORY	A	B	C	D
LPV DA	348-1¼	329 (400-1¼)	NA	
LNAV MDA	480-1	461 (500-1)	NA	
CIRCLING	660-1	641 (700-1)	NA	



SE-3, 10 JUL 2025 to 07 AUG 2025

SE-3, 10 JUL 2025 to 07 AUG 2025