

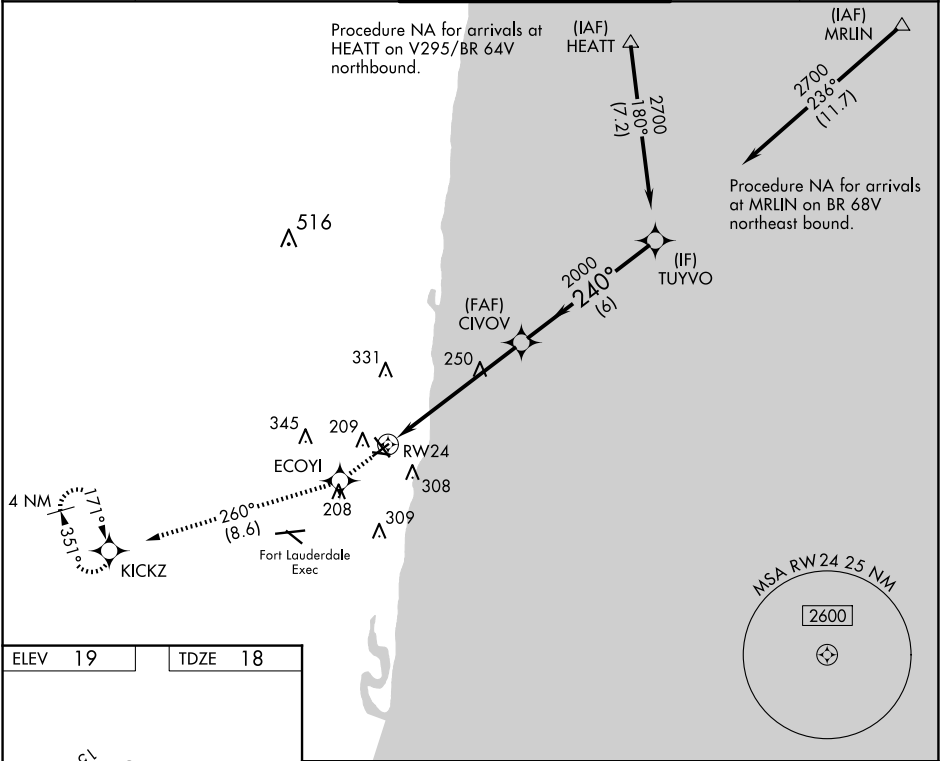
WAAS CH 70500 W24A	APP CRS 240°	Rwy Ldg TDZE Apt Elev	4001 18 19
----------------------------------------	------------------------	-----------------------------	---------------------------------------

RNAV (GPS) RWY 24
POMPANO BEACH AIRPARK (PMP)

⚠ DME/DME RNP-0.3 NA. When local altimeter setting not received, use Fort Lauderdale Exec altimeter setting. Helicopter visibility reduction below ¾ SM NA.

MISSED APPROACH: Climb to 2000 direct ECOYI and on track 260° to KICKZ and hold.

ATIS 120.55	MIAMI APP CON 119.7 306.3	POMPANO BEACH TOWER ★ 125.4 (CTAF) 0	GND CON 121.9	UNICOM 122.95
-----------------------	-------------------------------------	------------------------------------------------	-------------------------	-------------------------



ELEV 19	TDZE 18
---------	---------

MRL all Rwys
REIL Rwys 6, 10, 24, and 28

2000	ECOYI	tr 260°	KICKZ	VGSI and RNAV glidepath not coincident (VGSI Angle 3.50/TCH 49).
------	-------	---------	-------	------------------------------------------------------------------

*RNAV only.

CIVOV 2000

TUYVO 2700

GP 3.00° TCH 44

1.3	4.7 NM	6 NM
-----	--------	------

CATEGORY	A	B	C	D
LPV DA	319-1	301 (300-1)	NA	
RNAV MDA	500-1	482 (500-1)	NA	
C CIRCLING	660-1	641 (700-1)	NA	

SE-3, 10 JUL 2025 to 07 AUG 2025

SE-3, 10 JUL 2025 to 07 AUG 2025