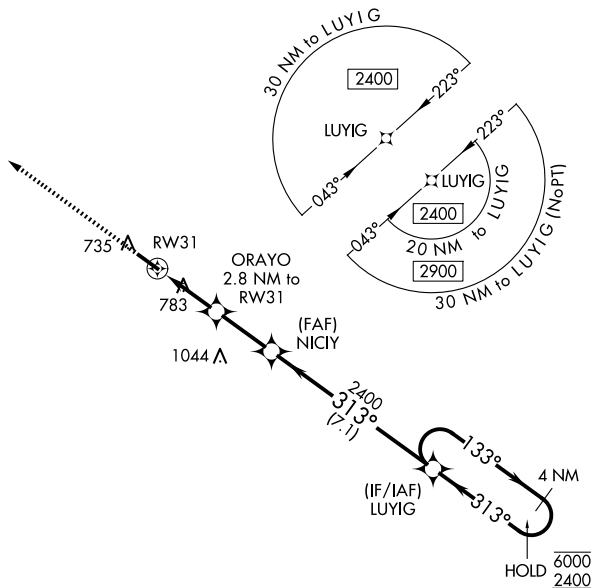


24193

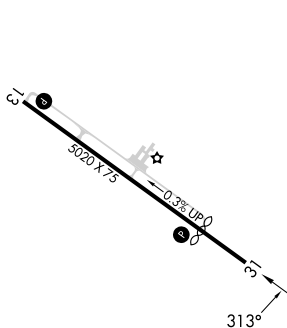
RNAV (GPS) RWY 31

WASHINGTON/WILKES COUNTY (IYY)

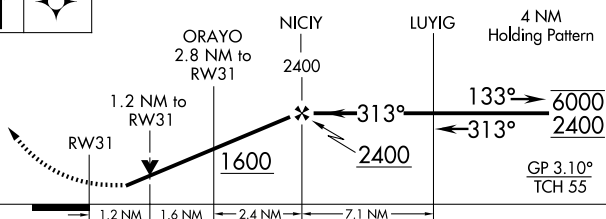
MISSED APPROACH:
Climb to 2400 direct
PACIFY and hold.


UNICOM
122.7 (CTAF) **L** Δ^{1057}

TDZE 640



2400	PACIY	VGSI and RNAV glidepath not coincident (VGSI Angle 3.00/TCH 32).
------	-------	--



CATEGORY		A	B	C	D
LPV	DA	891- $\frac{7}{8}$	251 (300- $\frac{7}{8}$)		NA
LNAV/ VNAV	DA	910- $\frac{7}{8}$	270 (300- $\frac{7}{8}$)		NA
LNAV	MDA	1040-1	400 (400-1)	1040-1 $\frac{1}{8}$ 400 (400-1 $\frac{1}{8}$)	NA
 CIRCLING		1080-1 434 (500-1)	1100-1 454 (500-1)	1100-1 $\frac{1}{2}$ 454 (500-1 $\frac{1}{2}$)	NA

WASHINGTON/WILKES COUNTY (IIY)
RNAV (GPS) RWY 31

33°47'N-82°49'W

SE-4, 10 JUL 2025 to 07 AUG 2025