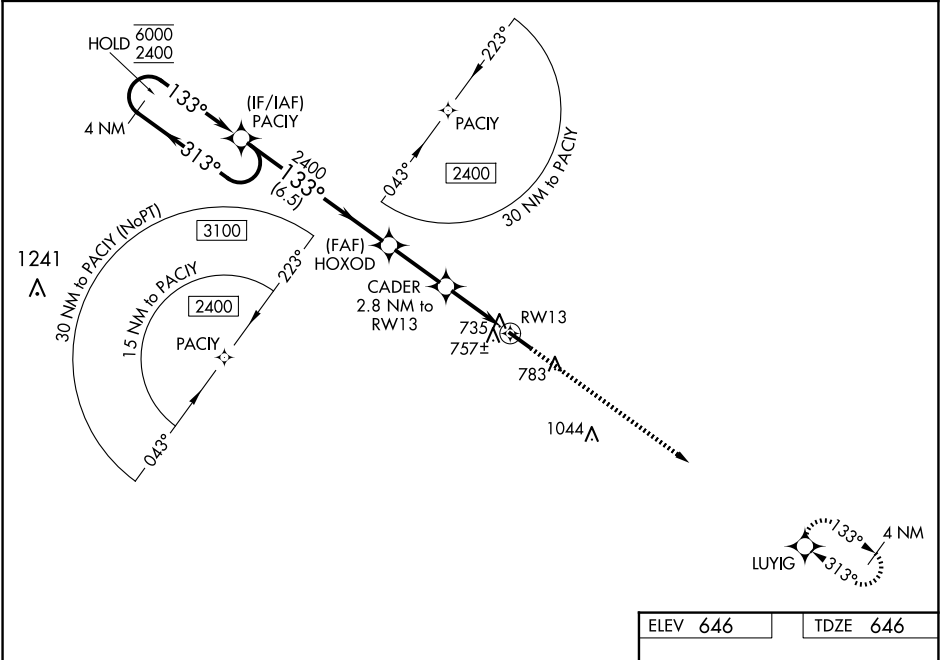


WAAS CH <b>62809</b> <b>W13A</b>	APP CRS <b>133°</b>	Rwy Idg <b>5020</b> TDZE <b>646</b> Apt Elev <b>646</b>
--	------------------------	---

RNAV (GPS) RWY 13

WASHINGTON/WILKES COUNTY (IIY)

RNP APCH-GPS.		MISSED APPROACH: Climb to 2400 direct LUYIG and hold.
AWOS-3 <b>118.375</b>	AUGUSTA APP CON ★ <b>126.8 270.3</b>	UNICOM <b>122.7 (CTAF) 0</b>



4 NM Holding Pattern		VGSI and RNAV glidepath not coincident (VGSI Angle 3.00/TCH 30).		2400	LUYIG
PACIY		HOXOD		2400	133° to RW13
6000 2400		CADER 2.8 NM to RW13		1600	1.1 NM to RW13
GP 3.00° TCH 52		RW13		5020 X 75	0.38° UPQ
6.5 NM		2.5 NM		1.7 NM	
1.1 NM					
CATEGORY	A	B	C	D	
LPV DA	958- <sup>7</sup> / <sub>8</sub>	312 (400- <sup>7</sup> / <sub>8</sub> )		NA	
LNNAV/VNAV DA	907- <sup>7</sup> / <sub>8</sub>	261 (300- <sup>7</sup> / <sub>8</sub> )		NA	
LNNAV MDA	1020-1	374 (400-1)		NA	
CIRCLING	1080-1 434 (500-1)	1100-1 454 (500-1)	1100-1½ 454 (500-1½)	NA	