

WAAS CH 86436 W18A	APP CRS 183°	Rwy Idg TDZE Apt Elev	5001 467 472
--	------------------------	-----------------------------	---

RNAV (GPS) RWY 18

DAVISS COUNTY (DCY)

RNP APCH - GPS.

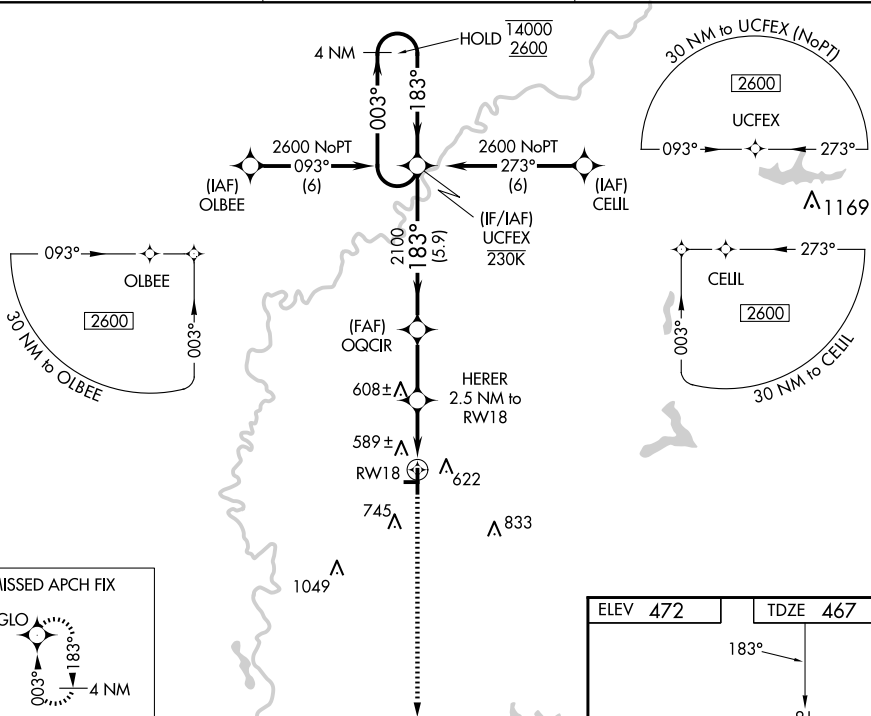


Circling NA to Rwy 9 and 27. Circling to Rwy 36 NA at night. For uncompensated Baro-VNAV systems, LNAV/VNAV NA below -15°C or above 54°C.

MISSED APPROACH:
Climb to 2200 direct
HOGLO and hold.

AWOS-3PT
119.075

EVANSVILLE APP CON ★
125.6 343.7

UNICOM
122.8 (CTAF) **L**

4 NM Holding Pattern

UCFEX

OGCIR

HERER 2.5 NM to RW18

HOGLO

14000
2600

← 003°
183° →

183°

2100

2100

1280

1.1 NM to RW18

RW18

GP 3.00°
TCH 43

5.9 NM

2.5 NM

1.4 NM

1.1

CATEGORY	A	B	C	D
LPV DA		778-1	311 (400-1)	
INAV/ VNAV DA		750-1	283 (300-1)	
INAV MDA		840-1	373 (400-1)	
CIRCLING	1020-1 548 (600-1)	1060-1 588 (600-1)	1060-1½ 588 (600-1½)	1300-2¾ 828 (900-2¾)

