

LOC/DME I-RLD	APP CRS	Rwy Idg	4009
110.5	189°	TDZE	390
Chan 42		Apt Elev	394

LOC RWY 19

RICHLAND (RLD)

▼

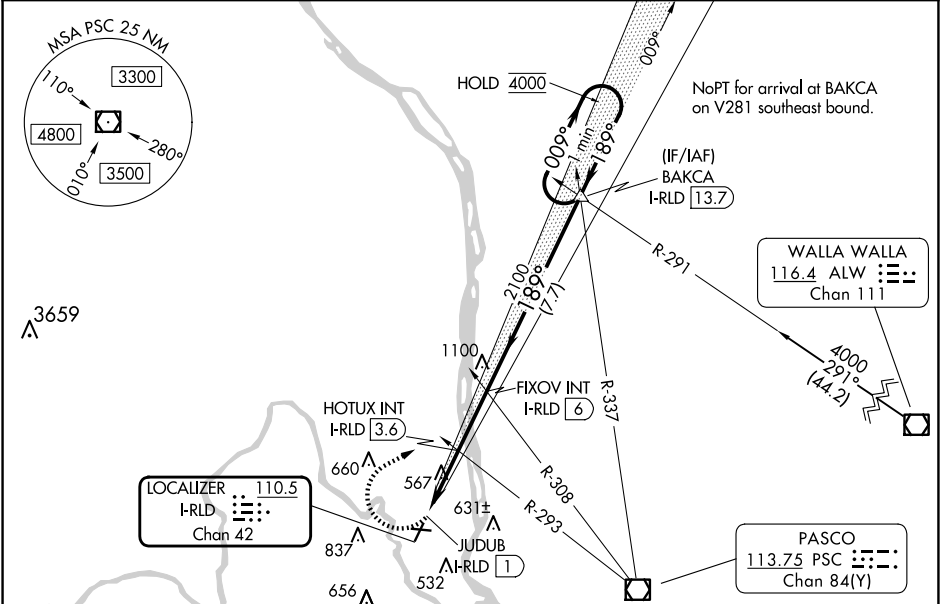
NA

Rwy 19 helicopter visibility reduction below ¼ SM NA. Inop table does not apply to S-19 Cat C. For inop ALS increase HOTUX fix minimums S-19 Cat D visibility ¼ SM.

MALS

MISSED APPROACH: Climbing right turn to 4000 on heading 045° and on PSC VOR/ DME R-337 to BAKCA INT/I-RLD 13.7 DME and hold, continue climb-in-hold to 4000.

AWOS-3PT 132.675	SPOKANE APP CON ★ 128.75 377.2	CLNC DEL 122.4	UNICOM 122.7 (CTAF) 0
---------------------	-----------------------------------	-------------------	--------------------------



ELEV 394

TDZE 390

4000

hdg 045°

PSC R-337

BAKCA

VGSI and descent angles not coincident (VGSI Angle 3.00/TCH 30).

One Minute Holding Pattern

0.3

1.1 NM

1.5 NM

2.4 NM

7.7 NM

CATEGORY	A	B	C	D
S-19	1300-1	910 (1000-1)	1300-2½	910 (1000-2½)
C CIRCLING	1300-1¼	906 (1000-1¼)	1300-2¾ 906 (1000-2¾)	1940-3 1546 (1600-3)
HOTUX FIX MINIMUMS (DUAL VOR RECEIVERS OR DME REQUIRED)				
S-19	880-¾	490 (500-¾)	880-1⅛	490 (500-1⅛)
C CIRCLING	920-1 526 (600-1)	1000-1 606 (700-1)	1200-2¼ 806 (900-2¼)	1940-3 1546 (1600-3)

REIL Rwys 1 and 19

MIRL Rwy 1-19 and 8-26

FAF to MAP 5 NM

Knots	60	90	120	150	180
Min:Sec	5:00	3:20	2:30	2:00	1:40