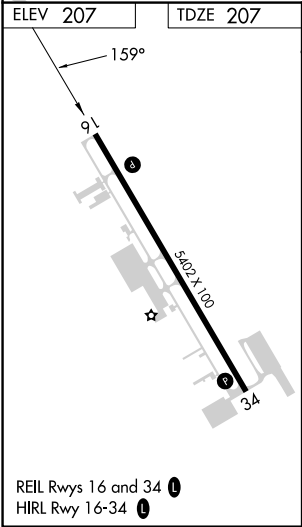
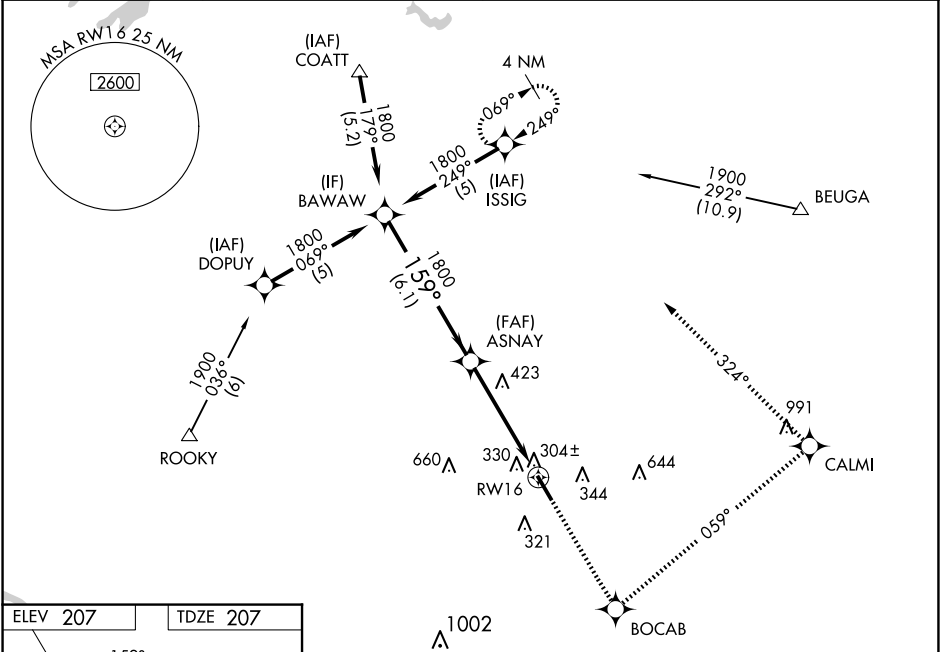


WAAS CH <b>42904</b> <b>W16A</b>	APP CRS <b>159°</b>	Rwy ldg <b>5402</b> TDZE <b>207</b> Apt Elev <b>207</b>	<b>RNAV (GPS) RWY 16</b> HANOVER COUNTY MUNI (OFP)
--	------------------------	---	---

RNP APCH.	MISSED APPROACH: Climb to 2000 direct BOCAB and left turn via 059° track to CALMI and left turn via 324° track to ISSIG and hold.
When local altimeter setting not received, use Richmond Intl altimeter setting and increase all DA 37 feet and all MDA 40 feet; increase LNAV/VNAV all Cats and LNAV Cats C/D visibility ¼ mile. Baro-VNAV NA when using Richmond Intl altimeter setting. For uncompensated Baro-VNAV systems LNAV/VNAV NA below -15°C or above 54°C. Rwy 16 helicopter visibility reduction below ¾ SM NA.	

ASOS <b>119.025</b>	POTOMAC APP CON (001°-185°) <b>126.4 307.2</b> (186°-360°) <b>126.75 307.2</b>	CLNC DEL <b>125.4</b>	UNICOM <b>122.7 (CTAF) 0</b>
------------------------	--	--------------------------	---------------------------------



BAWAW		2000 ↑		BOCAB ✧		CALMI tr 059° ↷		ISSIG tr 324° ↷	
Procedure Turn NA		ASNAY VGSi and RNAV glidepath not coincident (VGSi Angle 3.00/TCH 40).							
1800		159°		1800		RW16			
GP 3.00° TCH 40									
		6.1 NM		4.8 NM					
CATEGORY	A		B		C		D		
LPV DA			535-1¼		328 (400-1¼)				
LNAV/ VNAV DA			564-1¼		357 (400-1¼)				
LNAV MDA	700-1		493 (500-1)		700-1¼ 493 (500-1¼)		700-1½ 493 (500-1½)		
CIRCLING	700-1		493 (500-1)		900-2 693 (700-2)		1020-2¾ 813 (900-2¾)		