

LOC/DME I-OPP

109.7

Chan 34

APP CRS

159°

Rwy Idg

5402

TDZE

207

Apt Elev

207

LOC RWY 16

HANOVER COUNTY MUNI (OFP)

▼

▲

Helicopter visibility reduction below ¾ SM NA. When local altimeter setting not received, use Richmond Init altimeter setting and increase all MDAs 40 feet; increase LUKCI fix minimums S-16 Cat C visibility ½ SM.

MISSED APPROACH: Climb to 700 then climbing left turn to 2000 via RIC VORTAC R-345 to COATT INT and hold.

ASOS

119.025

POTOMAC APP CON

(001°-185°) 126.4 307.2

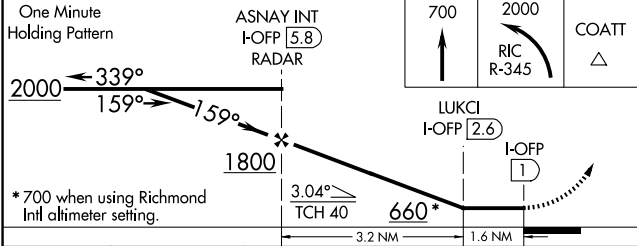
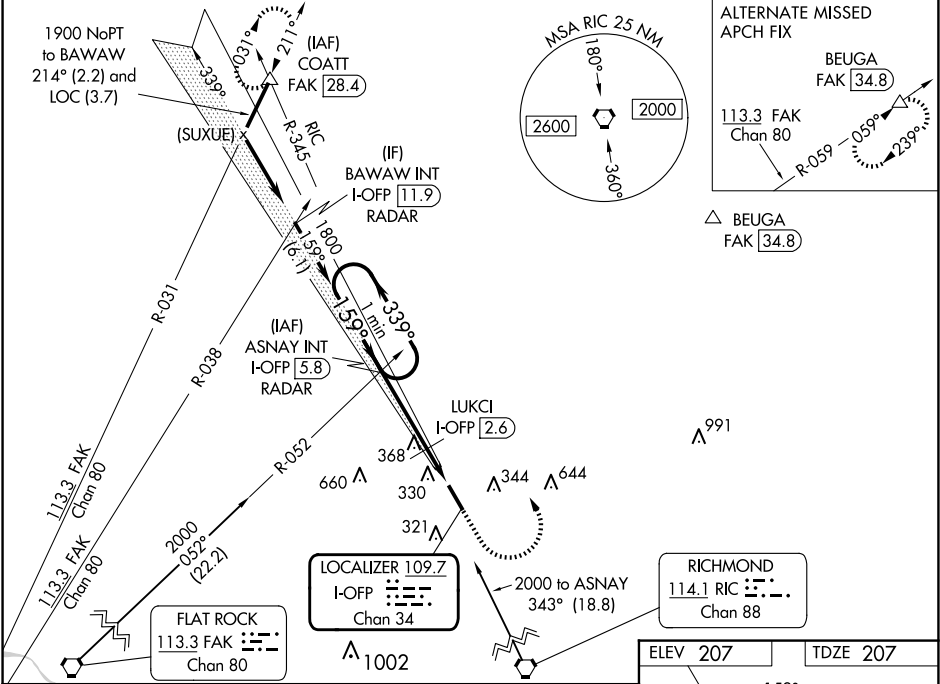
(186°-360°) 126.75 307.2

CLNC DEL

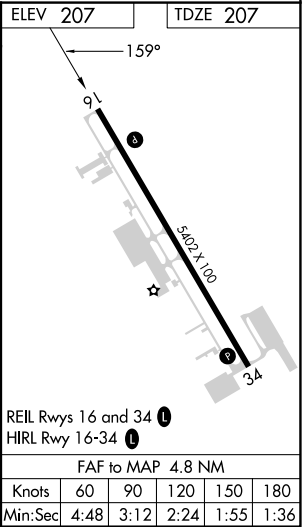
125.4

UNICOM

122.7 (CTAF) 0



CATEGORY	A	B	C	D
S-16	660-1	453 (500-1)	660-1⅜ 453 (500-1⅜)	660-1½ 453 (500-1½)
Ⓢ CIRCLING	660-1	453 (500-1)	900-2 693 (700-2)	1020-2¾ 813 (900-2¾)
LUKCI FIX MINIMUMS				
S-16	560-1	353 (400-1)	560-1¼ 353 (400-1¼)	
Ⓢ CIRCLING	660-1	453 (500-1)	900-2 693 (700-2)	1020-2¾ 813 (900-2¾)



NE-3, 10 JUL 2025 to 07 AUG 2025

NE-3, 10 JUL 2025 to 07 AUG 2025