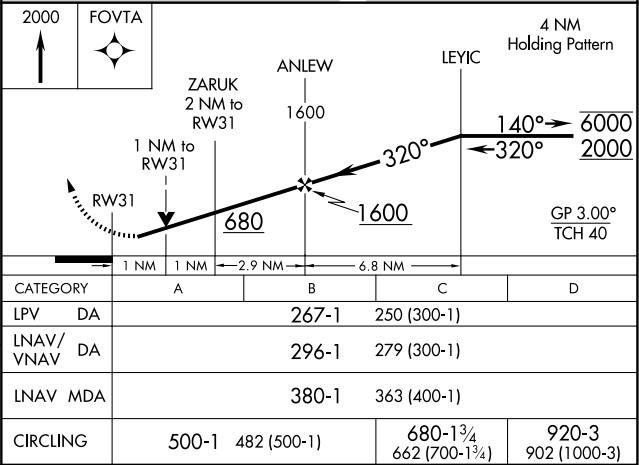
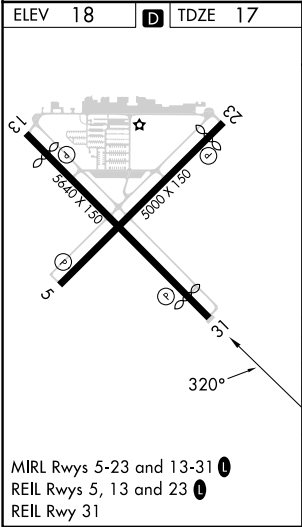
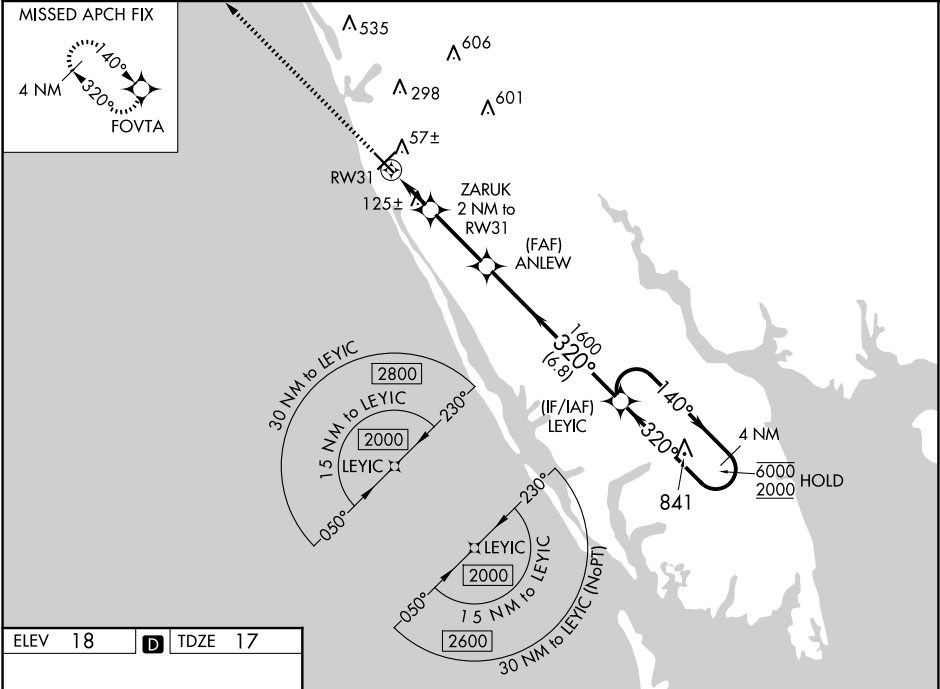


WAAS CH 78223 W31A	APP CRS 320°	Rwy Idg 5000 TDZE 17 Apt Elev 18
--	------------------------	---

RNAV (GPS) RWY 31
VENICE MUNI (VNC)

RNP APCH - GPS. Rwy 31 helicopter visibility reduction below ¾ SM NA. For uncompensated Baro-VNAV systems, LNAV/VNAV NA below -15°C or above 54°C.		MISSED APPROACH: Climb to 2000 direct FOVTA and hold.	
AWOS-3 119.275	TAMPA APP CON 119.65 353.575	CLNC DEL 118.075	UNICOM 122.725 (CTAF) 0



SE-3, 10 JUL 2025 to 07 AUG 2025

SE-3, 10 JUL 2025 to 07 AUG 2025