

24361

WAAS CH 53433 W23A	APP CRS 230°	Rwy Idg 4377 TDZE 18 Apt Elev 18
--	------------------------	---

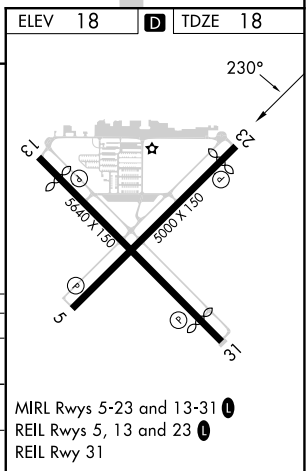
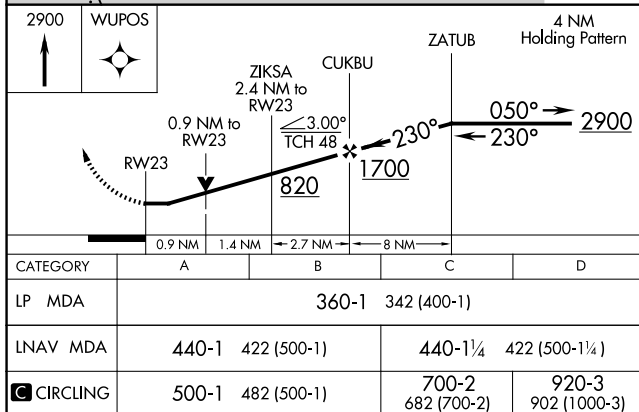
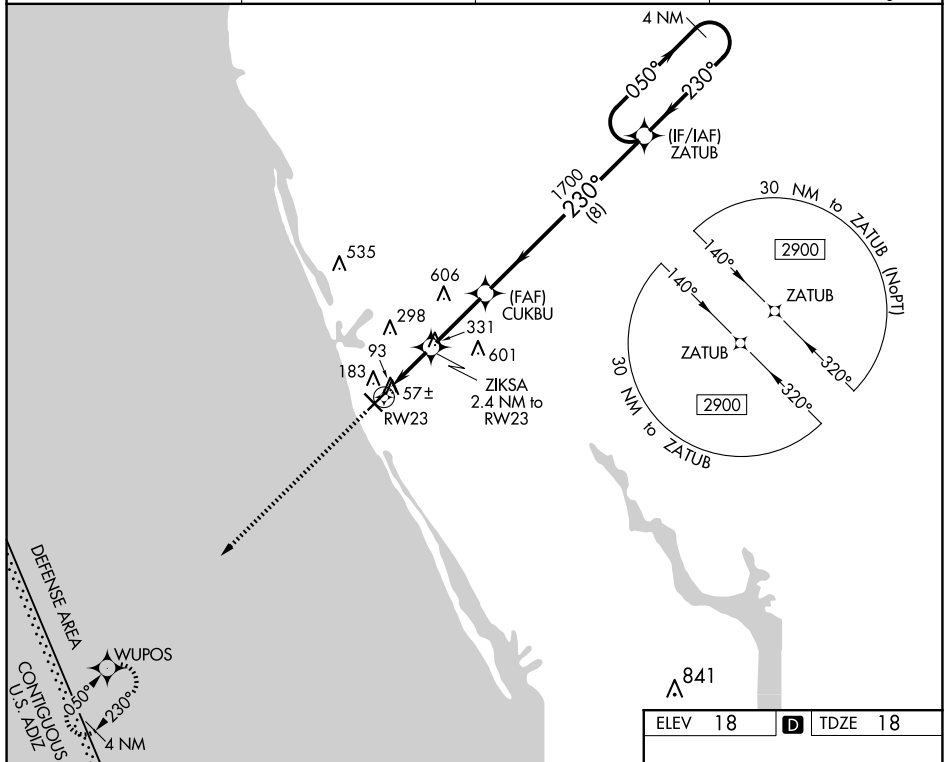
RNAV (GPS) RWY 23
VENICE MUNI (VNC)

VENICE MUNI (VNC)

T When local altimeter setting not received, use Sarasota altimeter setting and increase all MDA 60 feet and increase LP and LNAV Cats C, D visibility $\frac{1}{8}$ mile, and Circling Cat C visibility $\frac{1}{4}$ mile. **A** DME/DME RNP-0.3 NA. VDP NA with Sarasota altimeter setting. Helicopter visibility reduction below $\frac{3}{4}$ SM NA.

MISSED APPROACH:
Climb to 2900 direct
WUPOS and hold.

AWOS-3 119.275	TAMPA APP CON 119.65 353.575	CLNC DEL 118.075	UNICOM 122.725 (CTAF) 0
--------------------------	--	----------------------------	-----------------------------------



VENICE, FLORIDA
Orig-B 16OCT14

27°04'N-82°26'W

VENICE MUNI (VNC)

RNAV (GPS) RWY 23

SE-3, 10 JUL 2025 to 07 AUG 2025