

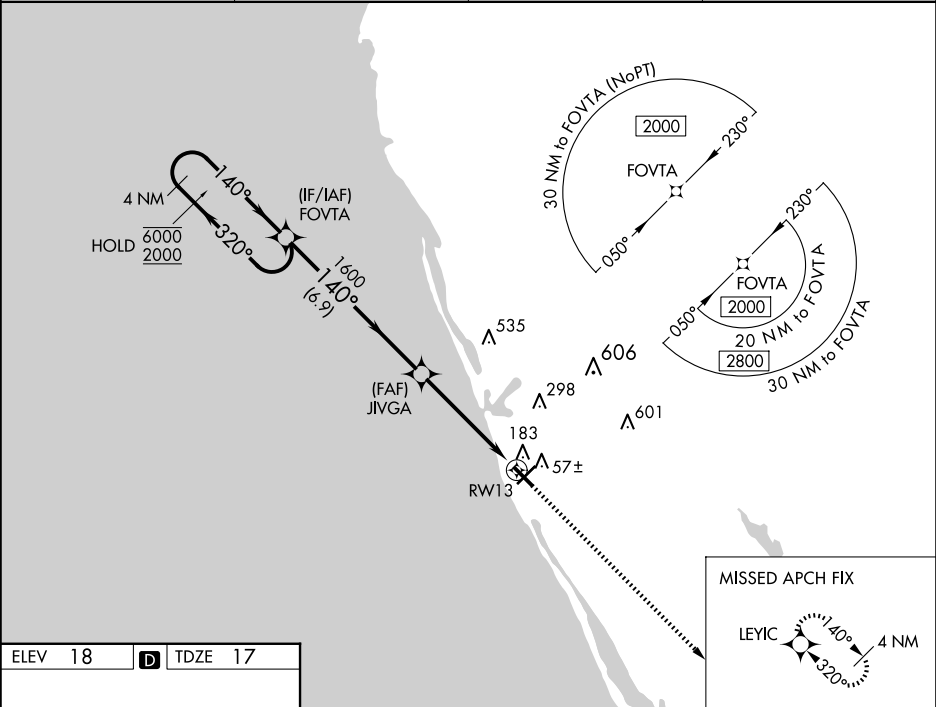
WAAS CH 86423 W13A	APP CRS 140°	Rwy Idg TDZE Apt Elev	5000 17 18
--	------------------------	-----------------------------	---------------------------------------

RNAV (GPS) RWY 13

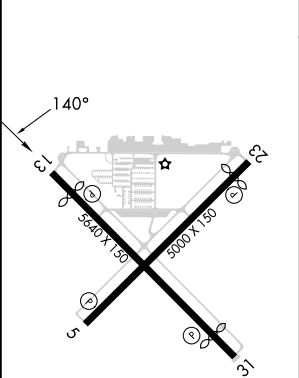
VENICE MUNI (VNC)

RNP APCH - GPS.	MISSED APPROACH: Climb to 2000 direct LEYIC and hold.
Rwy 13 helicopter visibility reduction below ¾ SM NA. For uncompensated Baro-VNAV systems, LNAV/VNAV NA below -15°C or above 54°C.	

AWOS-3 119.275	TAMPA APP CON 119.65 353.575	CLNC DEL 118.075	UNICOM 122.725 (CTAF) 0
--------------------------	--	----------------------------	--



ELEV 18	D	TDZE 17
---------	----------	---------



MIRL Rwy 5-23 and 13-31 **0**
REIL Rwy 5, 13 and 23 **0**
REIL Rwy 31

4 NM Holding Pattern					2000	LEYIC
FOVTA						
6000 ← 320° → 140° → 1600						
GP 3.00° TCH 48						
JIVGA 1600						
1.3 NM to RWY 13						
RWY 13						
6.9 NM						
3.5 NM						
1.3 NM						
CATEGORY	A	B	C	D		
LPV DA	267-1		250 (300-1)			
LNAV/VNAV DA	364-1		347 (400-1)			
LNAV MDA	460-1	443 (500-1)	460-1 3/8	443 (500-1 3/8)		
CIRCLING	500-1	482 (500-1)	680-1 3/4 662 (700-1 3/4)	920-3 902 (1000-3)		