

APP CRS
142°

Rwy Ldg
TDZE
1154

Apt Elev
1158

RNAV (GPS) RWY 14

GRAYLING AAF (GOV)

RNP APCH - GPS.

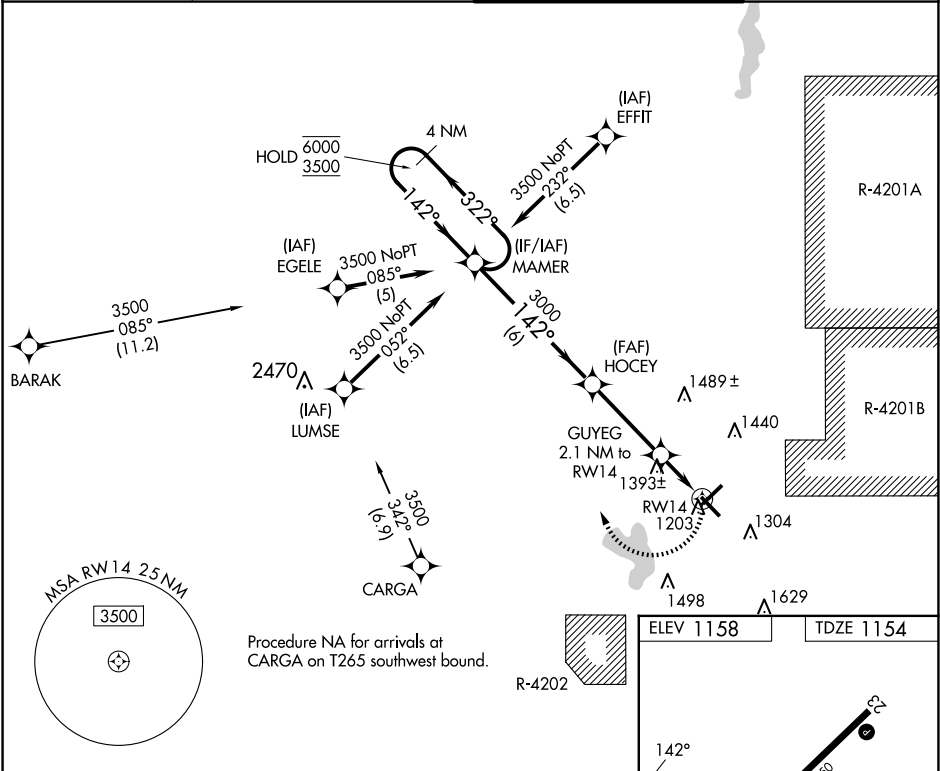
▽

⚠

VDP NA when using HTL altimeter setting. Circling Rwy 5, 23, 32 NA at night.
Rwy 14 helicopter visibility reduction below ¾ SM NA. When local altimeter setting not received, use HTL altimeter setting and increase all MDAs 60 feet and LNAV visibility Cat C and D ¼ SM, and Circling visibility Cat C and D ¼ SM.

MISSED APPROACH: Climbing right turn to 3500 direct MAMER and hold.

ATIS 119.075	MINNEAPOLIS CENTER 125.475 269.45	GRAYLING TOWER ★ 126.2 (CTAF) 0	GND CON 121.9
-----------------	--------------------------------------	------------------------------------	------------------



4 NM Holding Pattern MAMER					VGSI and descent angles not coincident (VGSI Angle 3.00/TCH 29).		3500	MAMER
6000 ← 322° 3500 → 142°					HOCEY		GUYEG 2.1 NM to RWY 14	1.5 NM to RWY 14
3000					3.00° TCH 45		1880	RWY 14
6 NM					3.5 NM		0.7 NM	1.5
CATEGORY	A	B	C	D				
LNAV MDA	1660-1	506 (600-1)	1660-1⅓	506 (600-1⅓)				
CIRCLING	1660-1 502 (600-1)	1720-1 562 (600-1)	1740-1½ 582 (600-1½)	1960-2½ 802 (900-2½)				
					REIL Rwys 5, 14, 23, and 32 0 MRL Rwy 5-23 and 14-32 0			