

BATAVIA, OHIO

AL-5955 (FAA)

21112

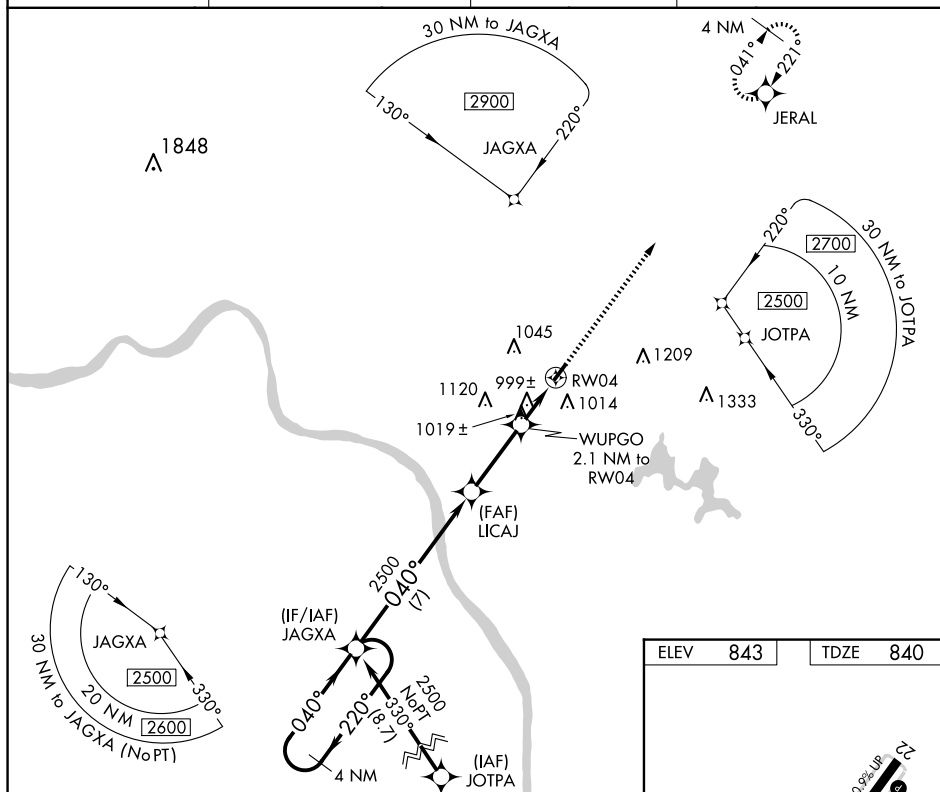
WAAS CH 58327 W04A	APP CRS 040°	Rwy Idg 3170 TDZE 840 Apt Elev 843
--	------------------------	---

RNAV (GPS) RWY 4
CLERMONT COUNTY (I69)

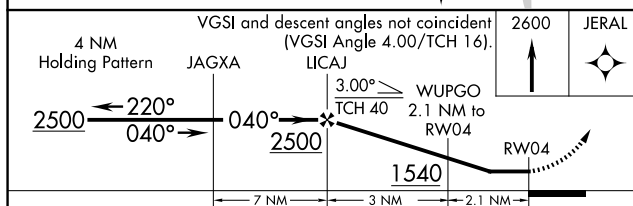
T Circling NA at night. Rwy 4/22 helicopter visibility reduction below 1 SM NA.
A DME/DME RNP-0.3 NA. When local altimeter setting not received, use Cincinnati Muni/
 Lunken Fld altimeter setting and increase all MDA 80 feet and all Cat C visibilities $\frac{1}{2}$ SM.

MISSED APPROACH:
Climb to 2600 direct
JERAL and hold.

AWOS-3 127.275	CINCNATI APP CON 121.0 254.25	CLNC DEL 124.9	UNICOM 122.975 (CTAF) 0
--------------------------	---	--------------------------	-----------------------------------



ELEV	843		TDZE	840
------	-----	--	------	-----



CATEGORY	A	B	C	D
LP MDA	1300-1	460 (500-1)	1300-1 ³ / ₈ 460 (500-1 ³ / ₈)	NA
LNAV MDA	1320-1	480 (500-1)	1320-1 ³ / ₈ 480 (500-1 ³ / ₈)	NA
C CIRCLING	1360-1	517 (600-1)	1520-2 677 (700-2)	NA

BATAVIA, OHIO
Amdt 1C 22JUN17

39°05'N-84°13'W

CLERMONT COUNTY (I69)
RNAV (GPS) RWY 4

EC-2, 10 JUL 2025 to 07 AUG 2025