

BATAVIA, OHIO

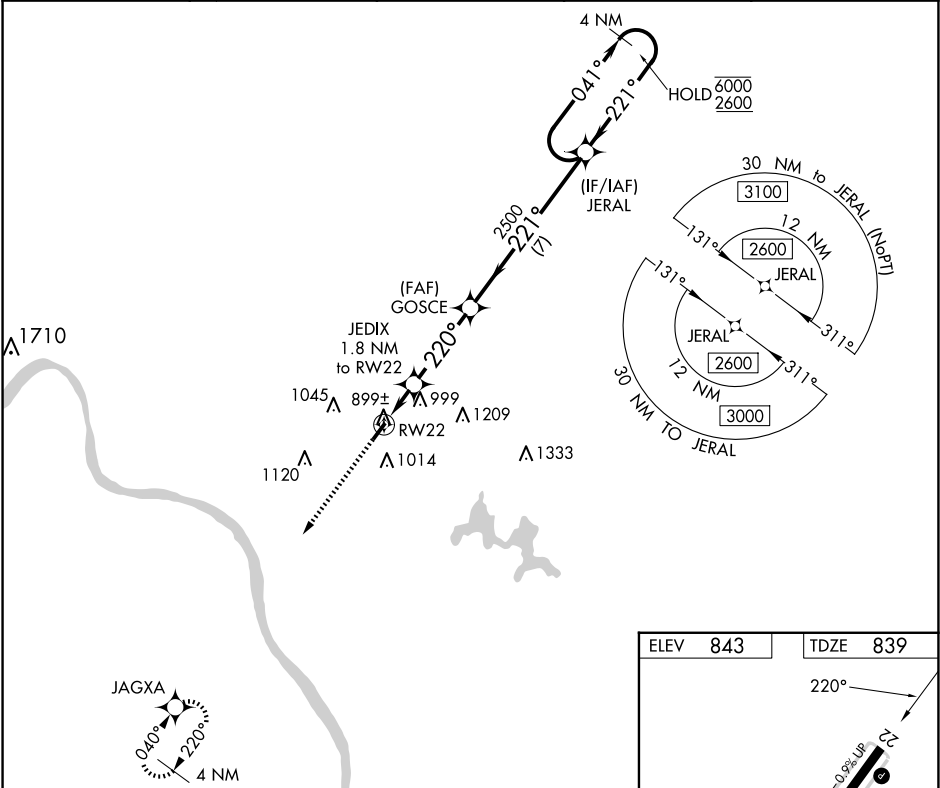
AL-5955 (FAA)

25107

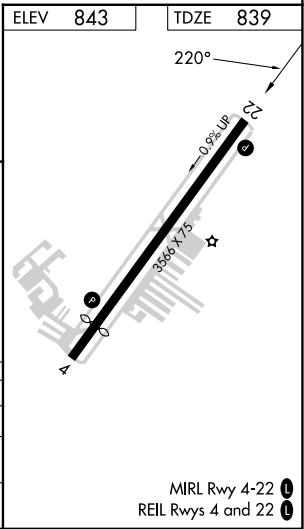
WAAS CH 82227 W22A	APP CRS 220°	Rwy Idg TDZE 839 Apt Elev 843
--	------------------------	---

RNAV (GPS) RWY 22
CLERMONT COUNTY (I69)

RNP APCH.		MISSED APPROACH: Climb to 2500 direct JAGXA and hold.	
Circling Rwy 4 NA at night. Rwy 22 helicopter visibility reduction below 1 SM NA.			
AWOS-3 127.275	CINCINNATI APP CON 121.0 254.25	CLNC DEL 124.9	UNICOM 122.975 (CTAF) 0



5000 ↑ JAGXA		Visual Segment - Obstacles.		JERAL 4 NM Holding Pattern	
RW22		JEDIX 1.8 NM to RW22		GOSCE	
1.8		3.4 NM		7 NM	
2500		1420		2500	
CATEGORY	A	B	C	D	
LP MDA	1160-1		321 (400-1)	NA	
LNAV MDA	1240-1		401 (400-1)	1240-1 1/8 401 (400-1 1/8)	NA
CIRCLING	1320-1 477 (500-1)		1360-1 517 (600-1)	1520-2 677 (700-2)	NA



BATAVIA, OHIO

Amdt 2 25FEB21

39°05'N-84°13'W

RNAV (GPS) RWY 22
CLERMONT COUNTY (I69)

EC-2, 10 JUL 2025 to 07 AUG 2025

EC-2, 10 JUL 2025 to 07 AUG 2025