

WAAS CH 93818 W17A	APP CRS 174°	Rwy Idg TDZE Apt Elev	5000 657 657
--	------------------------	-----------------------------	---

RNAV (GPS) RWY 17

CHESTER CATAWBA RGNL (DCM)

RNP APCH-GPS.

▼

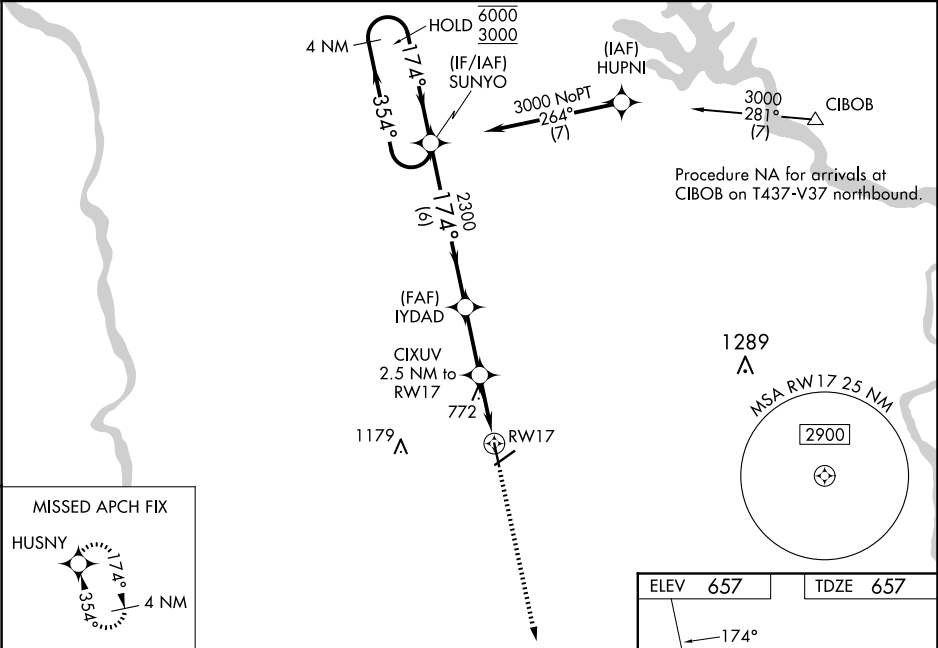
For uncompensated Baro-VNAV systems, LNAV/VNAV NA below -16°C or above 54°C.

⚠

Circling to Rwy 5-23 NA at night. Rwy 17 helicopter visibility reduction below ¾ SM NA. Baro-VNAV and VDP NA when using UZA altimeter setting. When local altimeter setting not received, use UZA altimeter setting and increase LPV DA to 940 feet and all visibilities ½ SM. Increase LNAV/VNAV DA to 1167 feet; increase all MDAs 40 feet and LNAV visibility Cat C/D ¼ SM.

MISSED APPROACH:
Climb to 3000 direct HUSNY and hold.

AWOS-3 120.975	CHARLOTTE APP CON 120.05 307.8	UNICOM 122.7 (CTAF) 0
--------------------------	--	---------------------------------



4 NM Holding Pattern		SUNYO		VGSI and RNAV glidepath not coincident (VGSI Angle 3.00/TCH 26).		3000		HUSNY	
6000 ← 354°		174° →		IYDAD 2300		CIXUV 2.5 NM to RW17		1.2 NM to RW17	
3000		174°		2300		1480		RW17	
GP 3.04°		TCH 34		6 NM		2.5 NM		1.3 NM	
						1.2			
CATEGORY		A		B		C		D	
LPV DA				907-¾		250 (300-¾)			
LNAV/VNAV DA				1134-1⅜		477 (500-1⅜)			
LNAV MDA		1060-1		403 (500-1)		1060-1⅝		403 (500-1⅝)	
CIRCLING		1160-1		503 (600-1)		1280-1¾ 623 (700-1¾)		1480-2¾ 823 (900-2¾)	

