

WAAS  
CH **86502**  
**W11A**

APP CRS  
**107°**

Rwy Idg  
TDZE **145**  
Apt Elev **146**

**4001**  
**145**  
**146**

**RNAV (GPS) RWY 11**  
WINTER HAVEN RGNL (GIF')

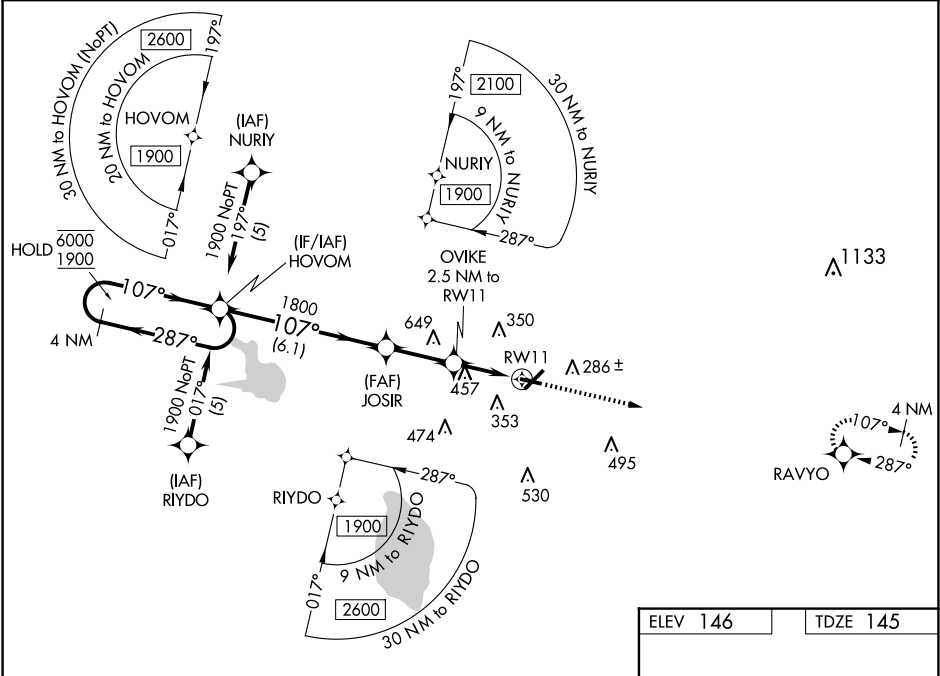
RNP APCH-GPS.

▼

Rwy 11 helicopter visibility reduction below 1 SM NA. Baro-VNAV NA when using Bartow altimeter setting. For uncompensated Baro-VNAV systems, LNAV/VNAV NA below 3°C or above 54°C. When local altimeter setting not received, use Bartow altimeter setting and increase LPV DA to 415 feet; increase LNAV/VNAV DA to 667 feet and all visibilities ½ SM; increase all MDAs 20 feet. Straight-in Rwy 11 NA at night, Circling Rwy 5, 11, 29 NA at night.

MISSED APPROACH:  
Climb to 2600 direct RAVYO and hold.

ASOS <b>133.675</b>	TAMPA APP CON <b>120.65 290.3</b>	CLNC DEL (GCO) <b>121.725</b>	UNICOM <b>123.05 (CTAF) 0</b>
------------------------	--------------------------------------	----------------------------------	----------------------------------



4 NM Holding Pattern

HOVOM

6000

1900

← 287°

107° →

GP 3.00°

TCH 45

1800

1800

JOSIR

1800

OVIKE

2.5 NM to RW11

2600

RAVYO

6.1 NM

2.5 NM

2.5 NM

RW11

CATEGORY	A	B	C	D
LPV DA	395-1 250 (300-1)			
LNAV/VNAV DA	647-1⅜ 502 (600-1⅜)			
LNAV MDA	760-1 615 (700-1)		760-1¾ 615 (700-1¾)	
CIRCLING	760-1 614 (700-1)		820-2 674 (700-2)	960-2¾ 814 (900-2¾)

REIL Rwys 5 and 23

REIL Rwys 11 and 29 0

MIRL Rwy 5-23 and 11-29 0

107°

4001 X 60

5005 X 100

29

5