

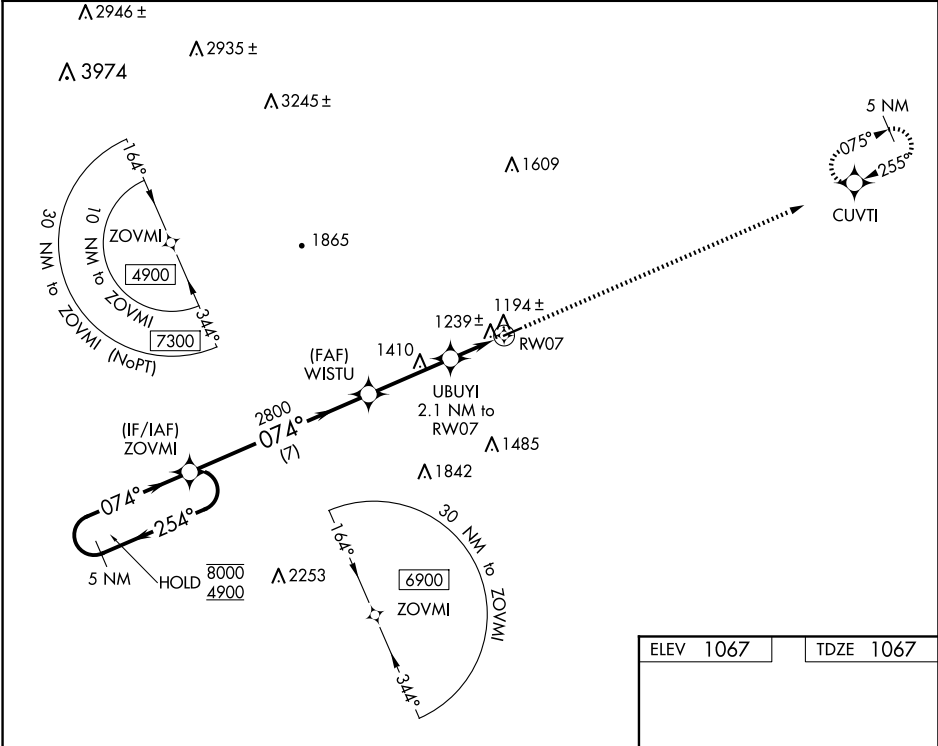
WAAS CH 65836 W07A	APP CRS 074°	Rwy Idg TDZE Apt Elev	4001 1067 1067
--	------------------------	-----------------------------	---

RNAV (GPS) RWY 7

ELKIN MUNI (ZEF)

RNP APCH.	Procedure NA at night. Obtain local altimeter setting on CTAF; when not received, use Mount Airy altimeter setting and increase all MDAs 80 feet and all Cats C/D visibilities ¼ SM. Rwy 7 helicopter visibility reduction below 1 SM NA.	MISSED APPROACH: Climb to 5100 direct CUVTI and hold, continue climb-in-hold to 5100.
-----------	---	---

ATLANTA CENTER 125.15 263.0	UNICOM 123.05 (CTAF) 0
---------------------------------------	----------------------------------



5 NM Holding Pattern		Visual Segment - Obstacles.		5100	CUVTI
8000 4900		WISTU		UBUYI 2.1 NM to RW07	RW07
254°		074°		1780	074° to RW07
7 NM		3.2 NM		2.1 NM	
CATEGORY	A	B	C	D	
LP MDA	1460-1	393 (400-1)	1460-1½	393 (400-1½)	
LNAV MDA	1500-1	433 (500-1)	1500-1¼	433 (500-1¼)	
CIRCLING	1540-1 473 (500-1)	1600-1 533 (600-1)	1680-1¾ 613 (700-1¾)	1840-2½ 773 (800-2½)	

SE-2, 10 JUL 2025 to 07 AUG 2025

SE-2, 10 JUL 2025 to 07 AUG 2025